



St. Alphonsus Road, SW4

£975,000

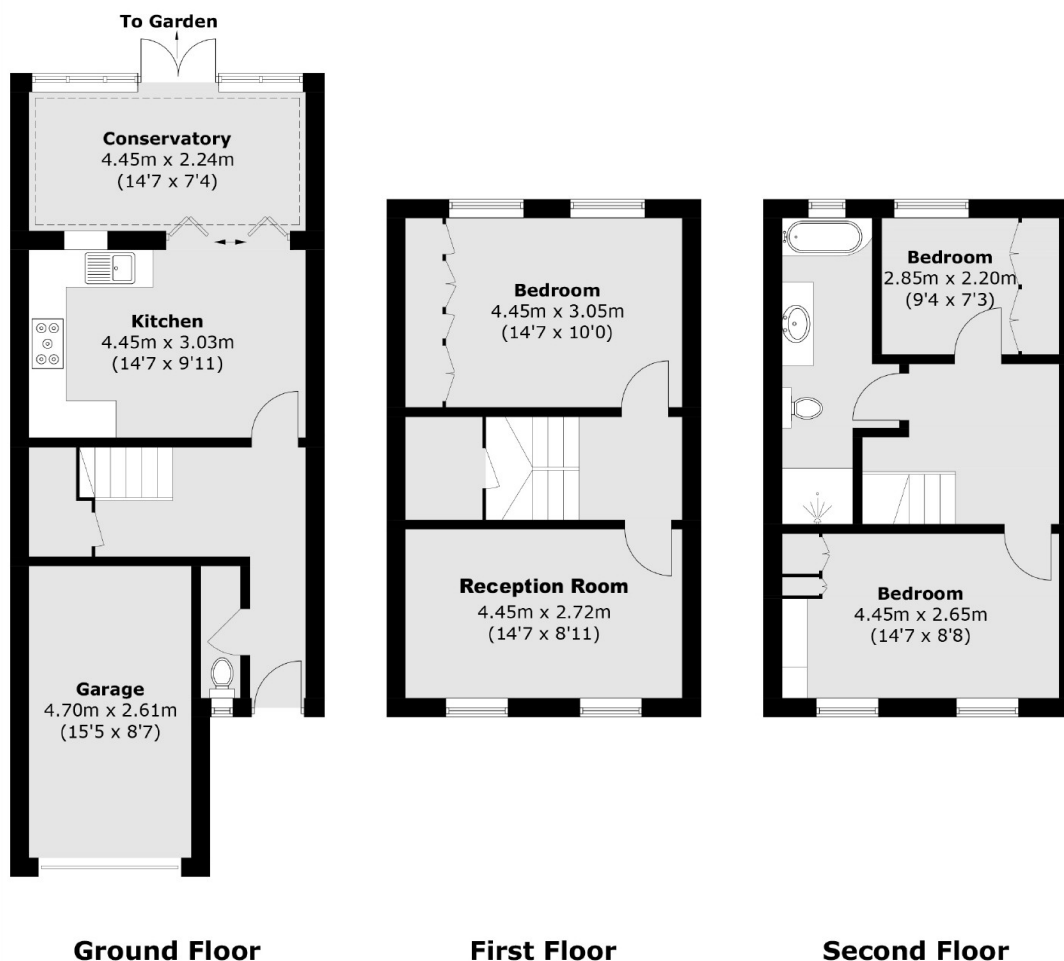
A rarely available townhouse naturally arranged over three floors with a south-facing garden, garage and off-street parking. Comprising a bright and airy reception room, a large well-equipped kitchen with an adjoining conservatory, three double bedrooms, a bathroom and a further cloakroom.

St. Alphonsus Road is a tree lined residential street situated within the highly desirable Abbeville Village, moments from the many shops, restaurants and cafés of Abbeville Road & Clapham Old Town, Clapham Common and the station (Northern Line) are at the end of the road.

Features

- Freehold Townhouse
- Reception Room
- Large Kitchen
- Three Bedrooms
- Garage
- Off-Street Parking

St. Alphonsus Road, London, SW4



Total area (approx.): 106.3 sq. m (1,144.2 sq. ft)
Garage area (approx.): 12.3 sq. m (132.4 sq. ft)