



Rosebery Road, SW2

£725,000

A superb split-level period conversion extending to an impressive 1,111 sq.ft over three floors. Comprising a spacious reception room with a bay window, a separate modern kitchen with ample room to dine, three double bedrooms and three bathrooms.

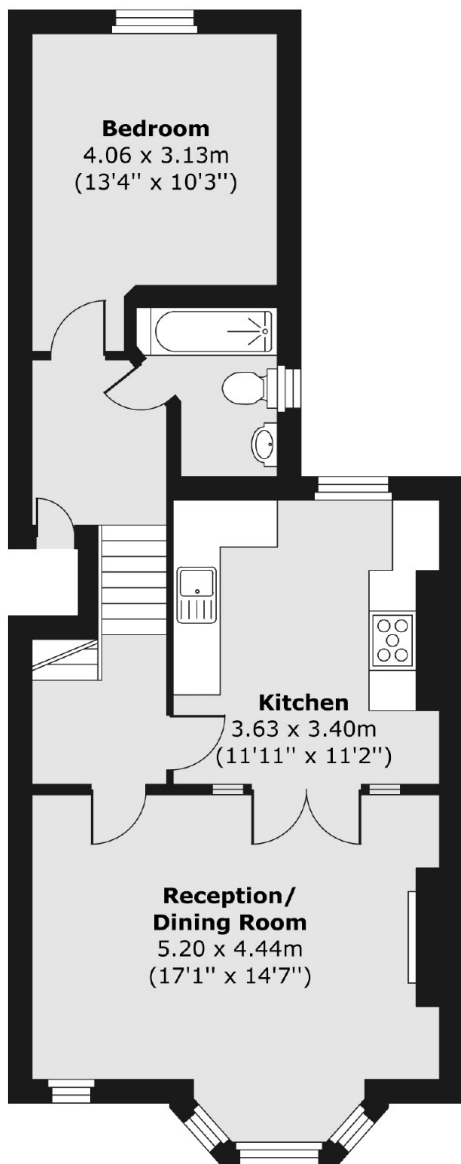
Rosebery Road is a quiet residential street within easy reach of Clapham and Brixton. Clapham Common/ Clapham North (Northern Line) and Brixton (Victoria Line and National Rail) Underground Stations are within close proximity. Abbeville Village is also located a short walk away with many local shops, restaurants and cafés.

Features

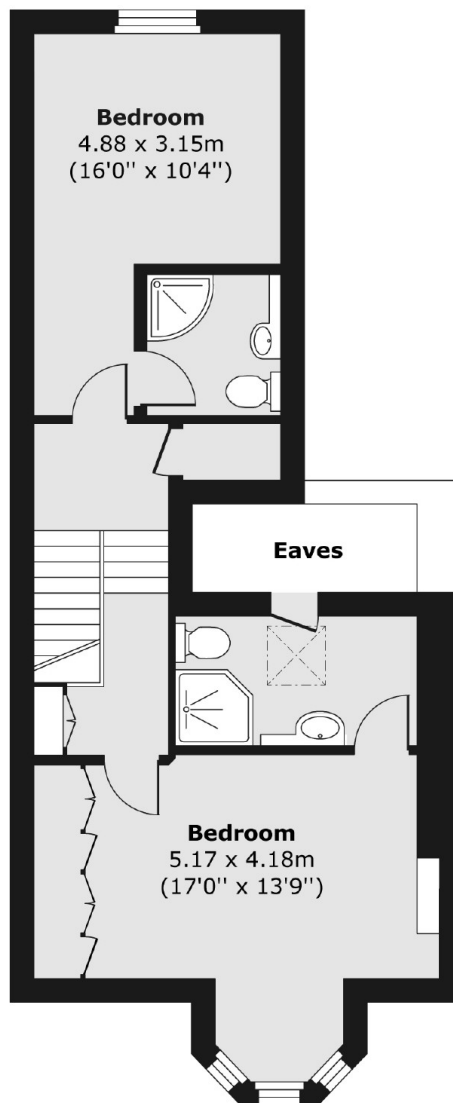
- Split Level Period Conversion
- Large Reception Room
- Separate Kitchen
- Three Bedrooms
- Three Bathrooms
- Chain Free

Rosebery Road, London, SW2

First Floor



Second Floor



Total area (approx.) 103.22 sq. m (1,111 sq. ft)