



Elms Crescent, SW4

£625,000

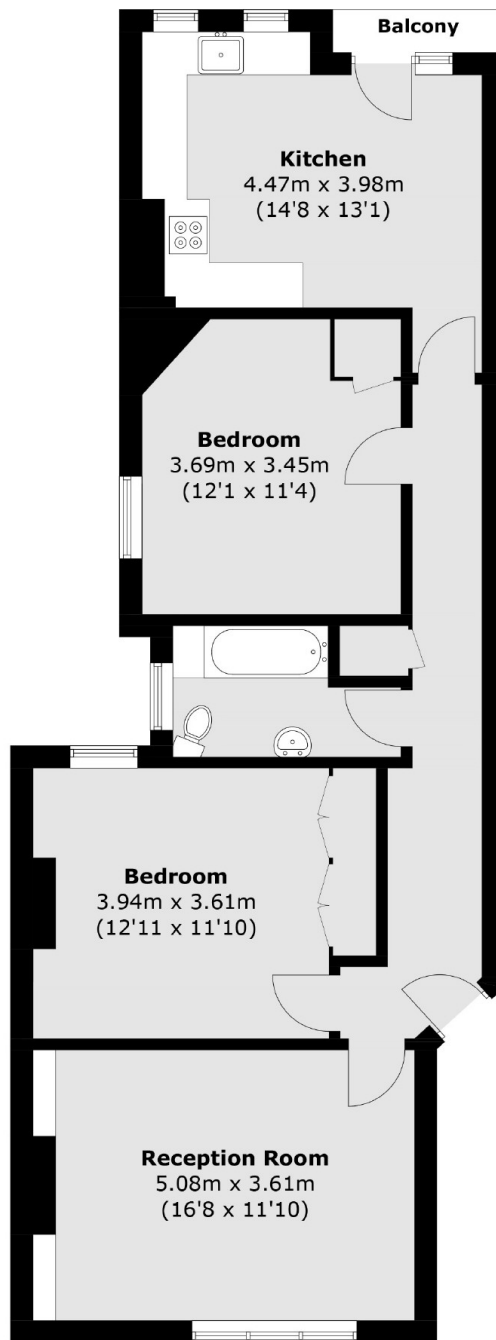
A rarely available top floor apartment situated within a desirable Victorian mansion block, having been refurbished to a high and tasteful standard the property is immaculately presented throughout. The bright and airy accommodation includes a large forward-facing reception room, a separate kitchen/breakfast room featuring a range of integrated appliances that opens onto a private balcony, two double bedrooms with fitted wardrobes and a modern bathroom. Outside there is a large communal garden, bike storage and parking on a first come, first served basis.

Elms Crescent is a tree lined street moments from the many local shops, restaurants and cafés of Abbeville Village, with Clapham South & Common stations, along with the common itself just a short stroll away.

Features

- Mansion Apartment
- Large Reception Room
- Kitchen/Breakfast Room
- Two Bedrooms
- Balcony
- Communal Garden

Elms Crescent, London, SW4



Total area (approx.): 82.9 sq. m (892.3 sq. ft)
Balcony: 1.3 sq. m (14.0 sq. ft)

Dexters

Clapham Sales
28 Abbeville Road
London
SW4 9NG
Sales
020 8742 4140

Energy Rating: C. We aim to make our particulars both accurate and reliable. However they are not guaranteed; nor do they form part of an offer or contract. If you require clarification on any points then please contact us, especially if you're traveling some distance to view. Please note that appliances and heating systems have not been tested and therefore no warranties can be given as to their good working order.

 **RICS** | Regulated
Estate Agent
and Letting Agent

[dexters.co.uk](https://www.dexters.co.uk)