



Bromells Road, SW4

£635,000

A contemporary first-floor apartment situated in the heart of Clapham Old Town which provides an abundance of immaculate living and entertaining space.

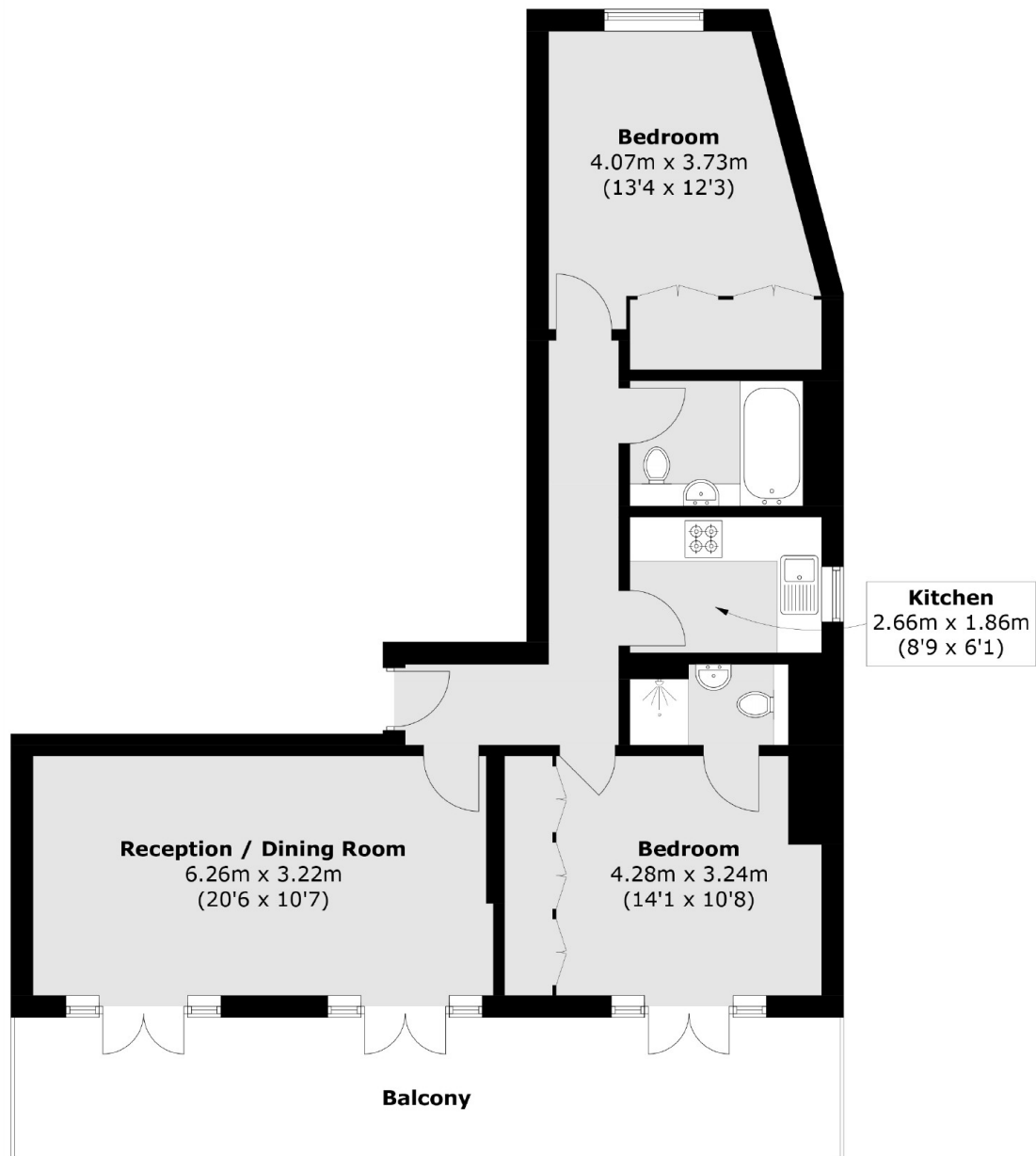
Accommodation includes a large reception room which opens onto a private balcony, a separate well-equipped kitchen, two double bedrooms with fitted wardrobes and two bathrooms.

Bromells Road is perfectly located for the wide open spaces of Clapham Common and its Underground station (Northern Line), with Clapham Old Town's many boutique shops, restaurants, bars and gym on your doorstep.

Features

- Lateral Apartment
- Reception Room
- Kitchen
- Two Double Bedrooms
- Two Bathrooms
- Chain Free

Bromells Road, London, SW4



Total area (approx.): 72.6 sq. m (781.4 sq. ft)
Balcony: 21.3 sq. m (229.3 sq. ft)