



Bourke Close, SW4

£975,000

A rarely available, contemporary freehold home situated within a desirable, private close. Comprising a large reception room with ample room to dine, a stylish kitchen, three bedrooms, two bathrooms and a west facing garden.

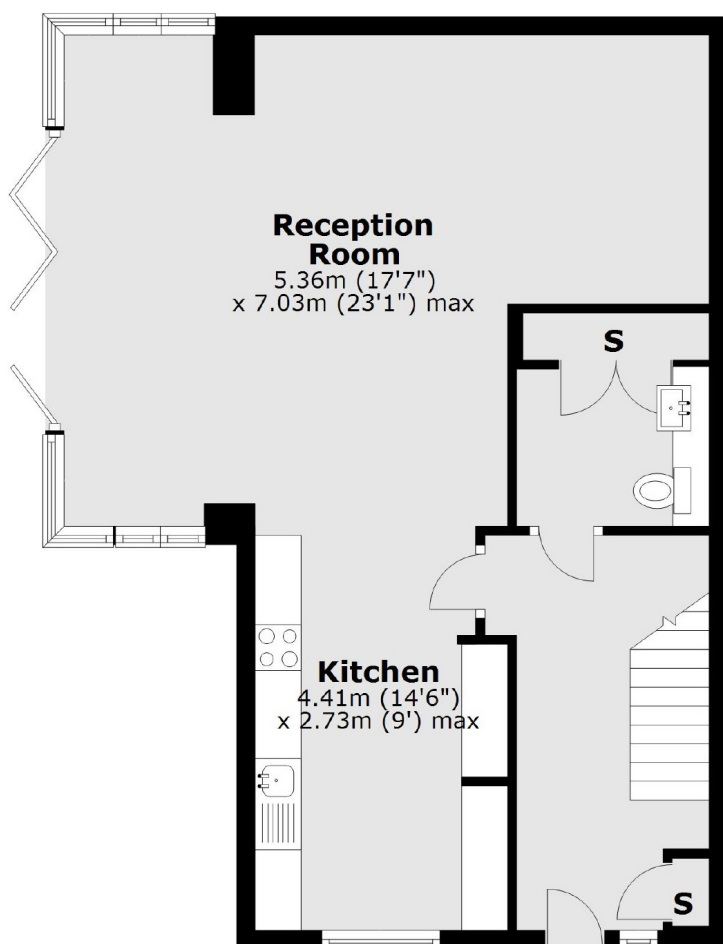
Bourke Close is situated a short walk away from the many desirable shops, restaurants and bars of Abbeville Village, Clapham Common and its station (Northern Line) are a short stroll away.

Features

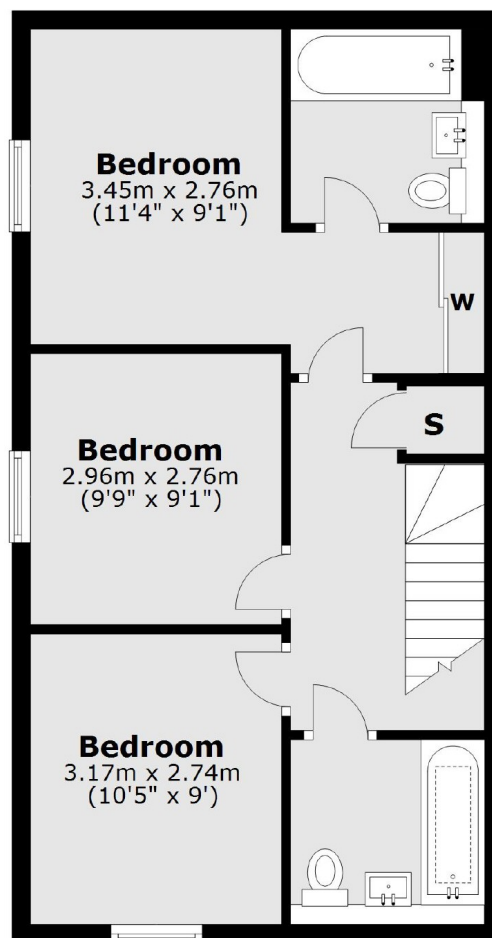
- Modern Freehold Home
- Extended Reception
- Three Bedrooms
- Two Bathrooms
- Landscaped Garden
- Allocated Parking

Bourke Close, London, SW4

Ground Floor



First Floor



Total area: approx. 107.9 sq. metres (1161.3 sq. feet)