



## The Boulevard, SW17

£525,000

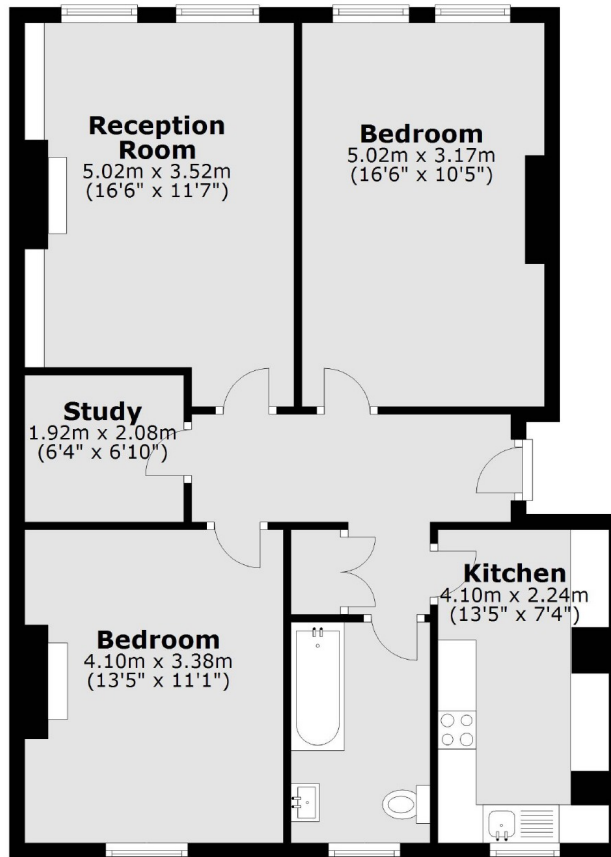
This contemporary mansion apartment extends to an impressive 814 sq.ft and comprises a spacious reception room with ample room to dine, a separate modern kitchen, two double bedrooms, a study and a bathroom.

The Boulevard is situated in central Balham and benefits from a host of local amenities including shops, bars and restaurants. Balham station (Northern Line) is within close proximity and provides excellent transport links into the city.

### Features

- Mansion Apartment
- Large Reception Room
- Separate Kitchen
- Two Double Bedroom
- Study
- Chain Free

# The Boulevard, London, SW17



Total area: approx. 75.7 sq. metres (814.4 sq. feet)