



St. Luke's Avenue, SW4

£600,000

Dexters



St. Luke's Avenue, SW4

A highly sought-after and rarely available split-level period conversion situated in the heart of Clapham. The naturally bright and airy accommodation effortlessly blends functional living with impressive entertaining space.

Comprising a large reception room with ample room to dine, a well-equipped modern kitchen which includes a range of integrated appliances, two double bedrooms, a vast loft room and a bathroom. The property is offered to the market with a share of freehold.

St. Luke's Avenue provides excellent access to the shops, bars and restaurants of Clapham High Street and Clapham Old Town. Clapham Common and two Northern Line stations are also very close by.

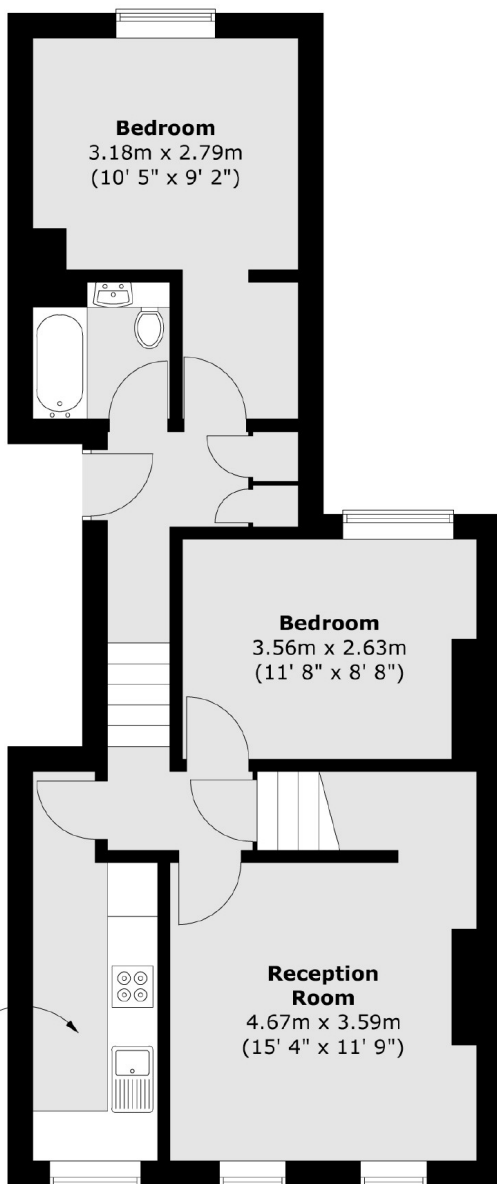
Features

- Split-Level Period Conversion
- Reception Room
- Separate Kitchen
- Two Double Bedrooms
- Loft Room
- Share Of Freehold

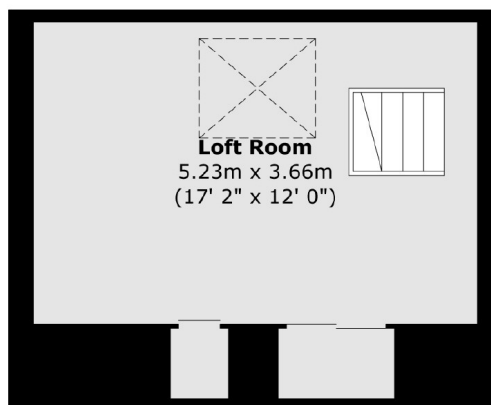


St. Luke's Avenue, London, SW4

Second Floor



Third Floor



Total area (approx.) : 77.8 sq. m (837 sq. ft)