



**Solon Road, SW2**

**£1,100,000**

**Dexters**



## Solon Road, SW2

This charming Victorian home provides an abundance of natural light and airy accommodation over three floors and blends classic elegance with modern comfort.

Over the ground floor, there is a large double reception room with a bay window, two fireplaces and original plasterwork, and a contemporary, well-equipped kitchen diner which opens onto a peaceful, mature garden.

The first and second floors include four double bedrooms and two bathrooms, the principal bedroom is traditionally situated towards the front of the property and spans the full width. Whilst naturally well proportioned the property retains the potential to extend into both the loft and side return.

Solon Road is located in a residential area nestled between Clapham and Brixton and is within easy reach of many local amenities. Several nearby transport options include the Northern Line, Victoria Line & Overground Services.

### Features

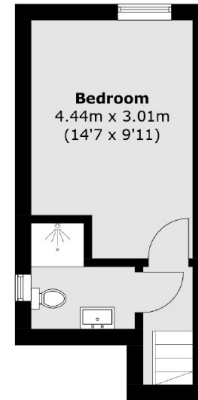
- Freehold Home
- Double Reception Room
- Four Bedrooms
- Two Bathrooms
- Chain Free
- Potential To Extend STPP







# Solon Road, London, SW2



**Second Floor**



**Cellar**

**Ground Floor**

**First Floor**

Total area (approx.): 130.8 sq. m (1,407.8 sq. ft)  
(Including Cellar)