



## Union Road, SW4

### £800,000

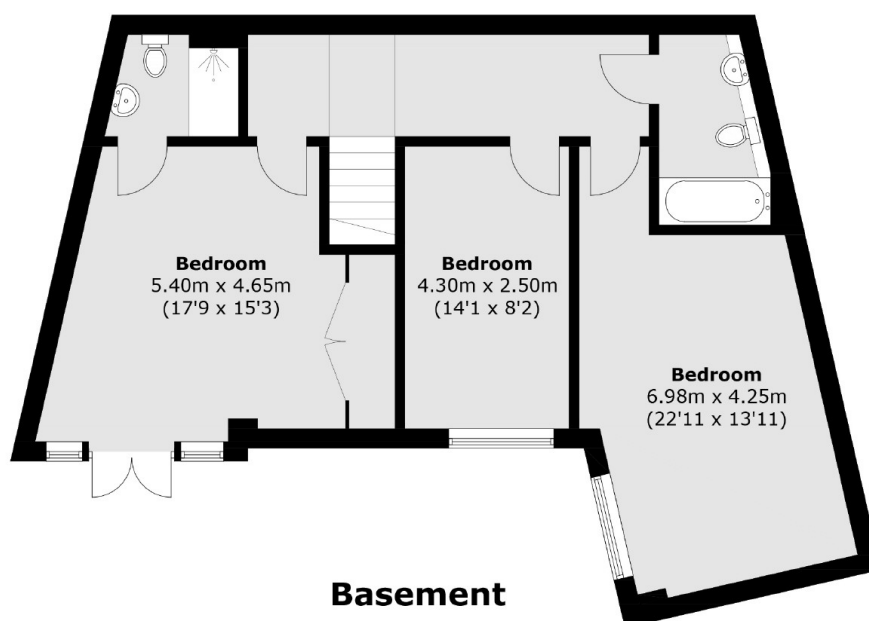
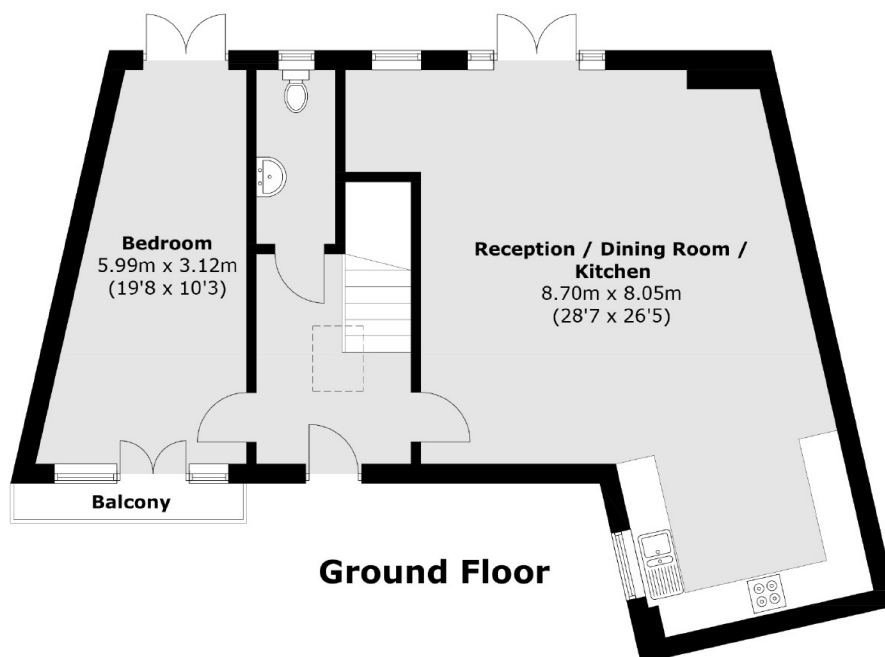
A detached duplex apartment comprising of over 1500 sqft with four double bedrooms, private garden and a private allocated parking space located in a smart modern development.

Union Road is a sought after residential street situated moments from the many shops, restaurants and cafés of Clapham Old Town & Clapham High Street, Clapham North & Stockwell Underground stations are a very short walk away.

### Features

- Detached Duplex
- Chain Free
- Four Double Bedrooms
- Two Bathrooms & WC
- Allocated Parking
- Private Garden

# Union Road, London, SW4



Total area (approx.): 147.2 sq. m (1,584.4 sq. ft)  
Balcony: 1.9 sq. m (20.4 sq. ft)