



## Windmill Drive, SW4

£695,000

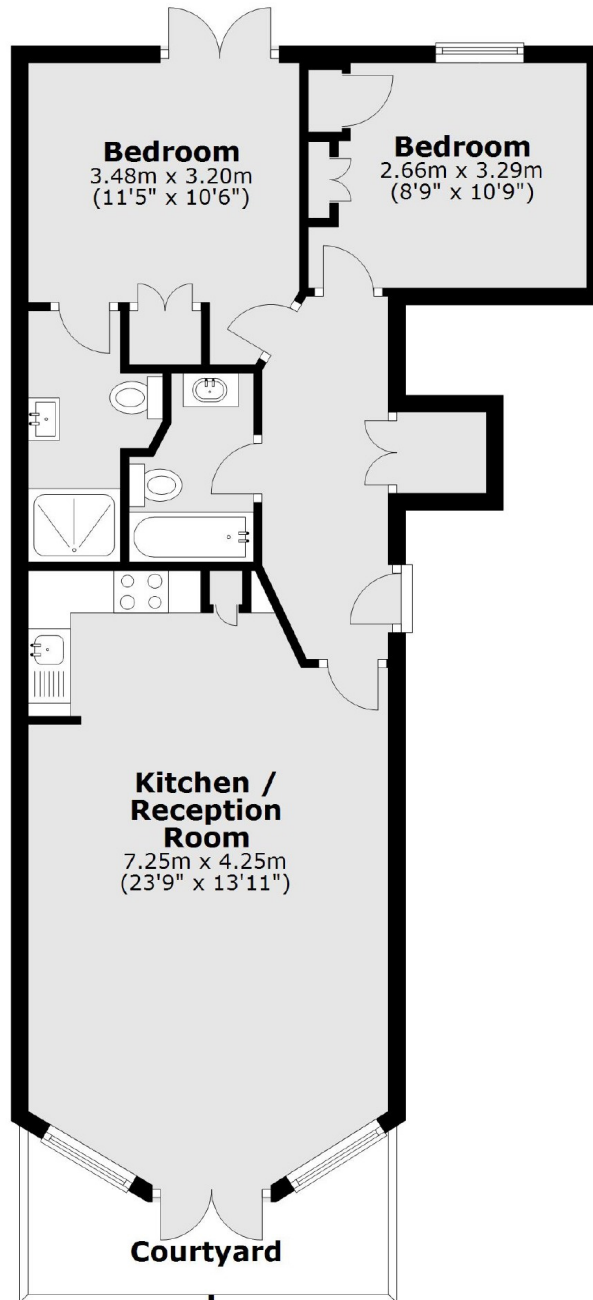
This rarely available, ground floor period conversion comprises 23ft open plan reception room, two double bedrooms and two bathrooms, outside there is a large, west facing garden.

Windmill Drive represents a small community of highly desirable homes positioned upon Clapham Common itself. Providing easy access to the many shops, restaurants and bars of the Abbeville Village along with Clapham South & Common stations (Northern Line).

### Features

- Period Conversion
- Two Bedrooms
- Two Bathrooms
- Private Garden
- Long Lease
- Chain Free

# Windmill Drive, London, SW4



Total area: approx. 62.3 sq. metres (671.0 sq. feet)