



Wingford Road, SW2

£460,000

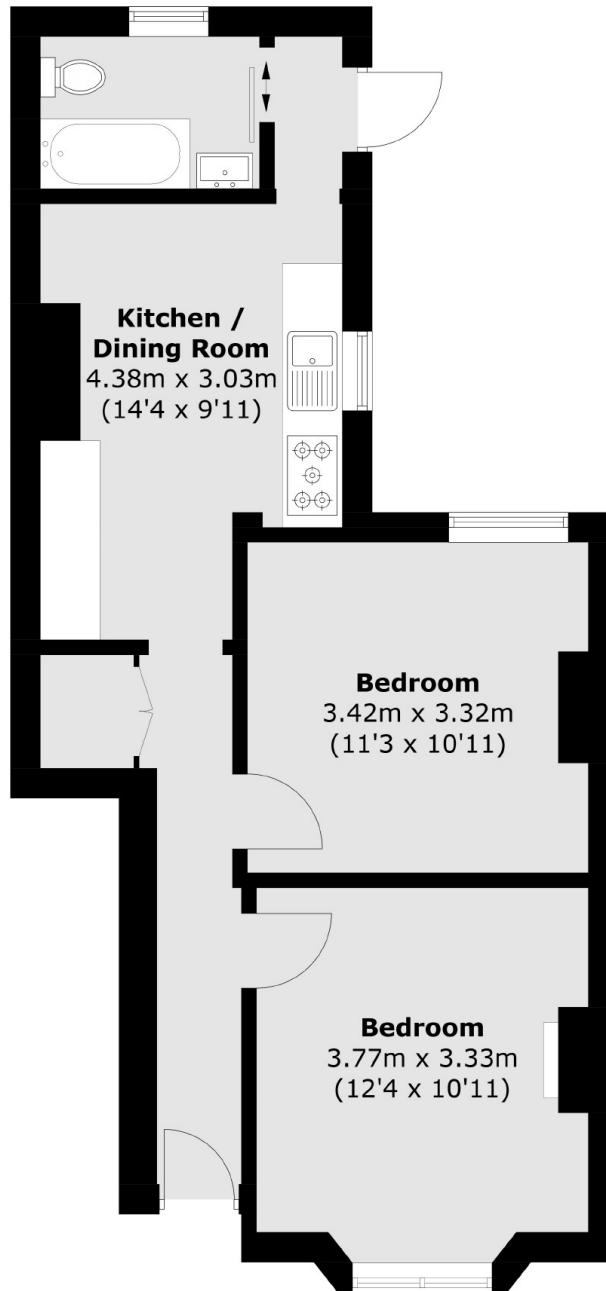
Having been extensively refurbished to an uncompromising standard throughout, this ground-floor maisonette blends period character with contemporary living. Comprising a spacious reception room with a bay window, a separate kitchen/breakfast room featuring a range of integrated appliances, a double bedroom and a modern bathroom. Outside there is low maintenance, private garden.

Wingford Road is located close to the popular Abbeville Village, Clapham Common & Brixton. Transport links are excellent with regular bus services on Kings Avenue and both Clapham South and Clapham Common Stations (Northern Line).

Features

- Period Maisonette
- Reception Room
- Double Bedroom
- Separate Kitchen
- Private Garden
- Chain Free

Wingford Road, London, SW2



Total area (approx.): 48.3 sq. m (519.9 sq. ft)