



Brixton Water Lane, SW2

£375,000

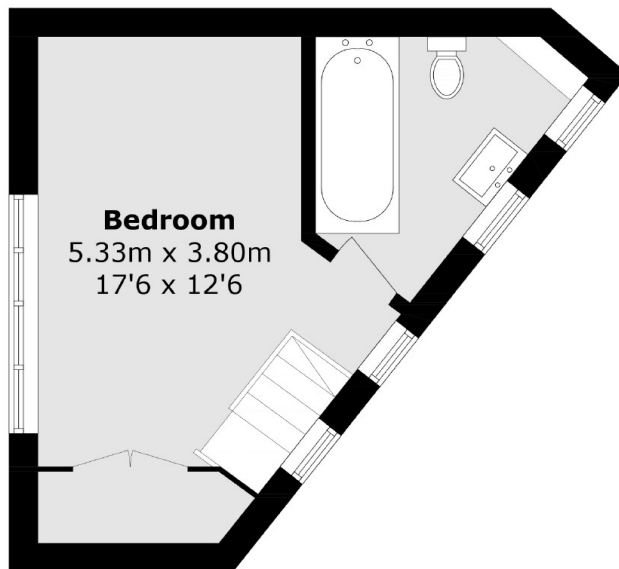
A bright and airy, split level modern house presented in good order throughout, comprising a large open plan reception room with a well-equipped kitchen and ample room to dine. Upstairs a double bedroom and en-suite bathroom.

Brixton Water Lane is perfectly situated between the green open spaces of Brockwell Park and the many shops, bars and restaurants of central Brixton, with Brixton Station (Victoria Line) being just around the corner.

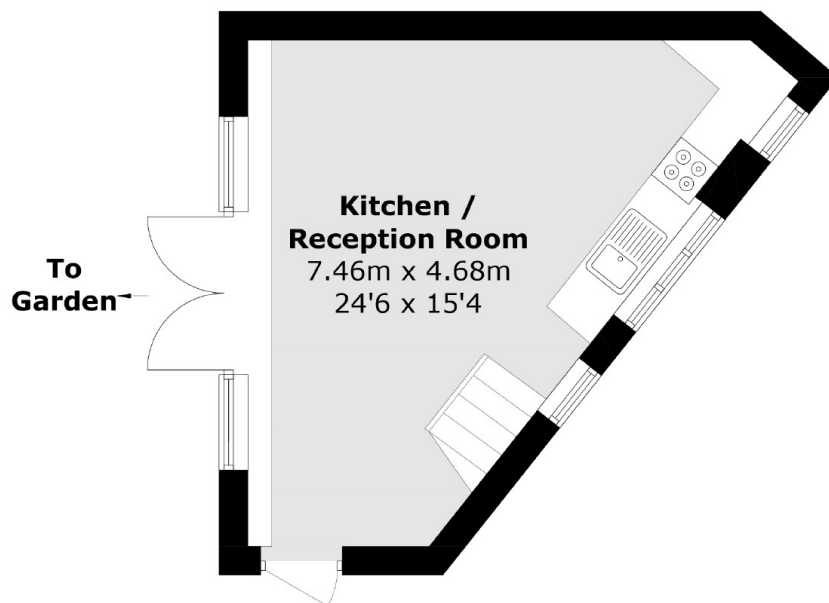
Features

- Freehold
- Modern House
- Split Level
- Open Plan
- Chain Free
- Under Floor Heating Throughout

Brixton Water Lane, London, SW2



First Floor



Ground Floor

Total area (approx.): 42.4 sq. m (456.3 sq. ft)