



## Ostade Road, SW2

£525,000

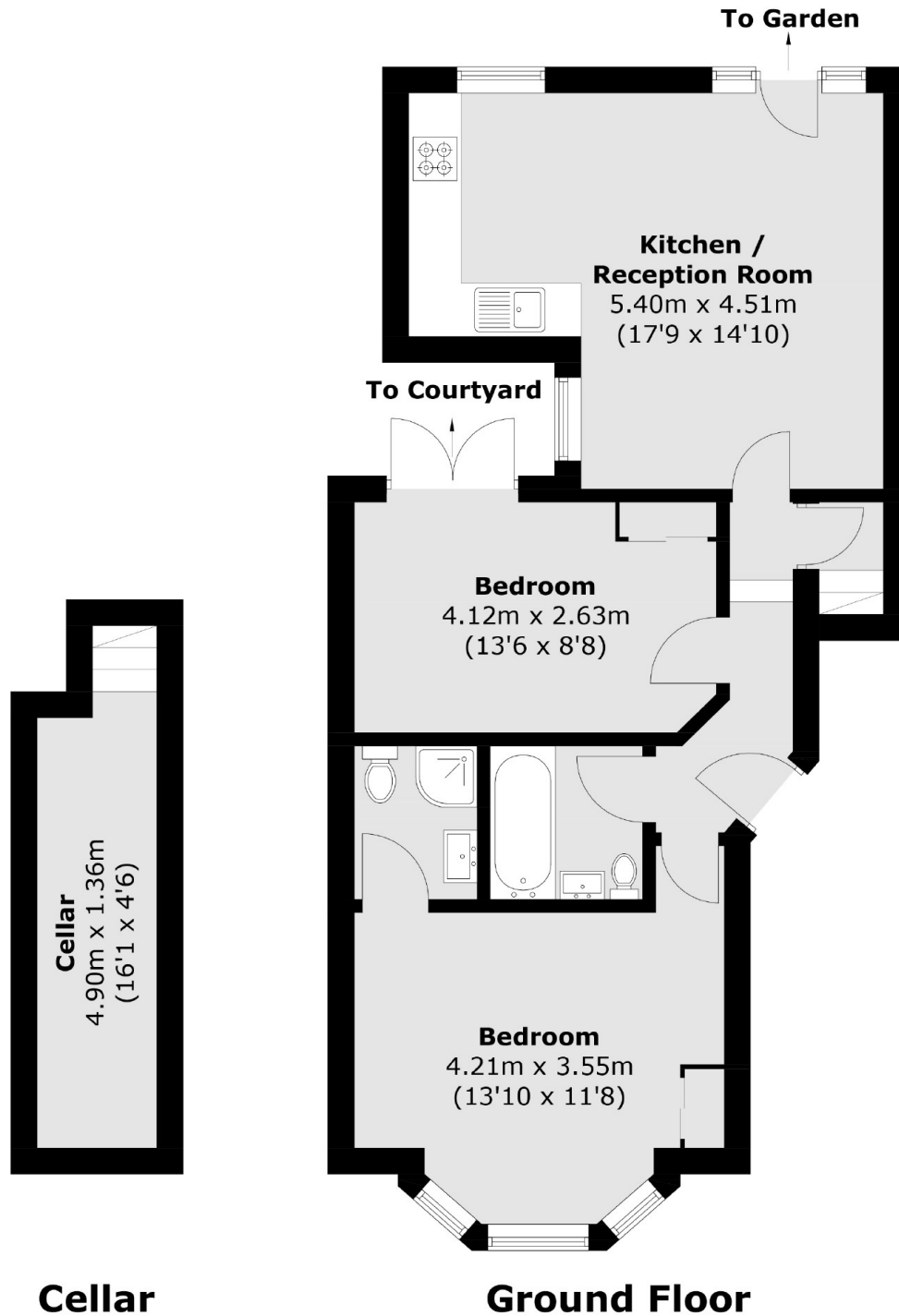
Two double bedroom ground floor period conversion flat with open plan reception room and private garden in a popular location near Brixton Town Centre.

Ostade Road is a residential street located between Brixton Hill and Streatham Hill not too far from Brockwell Park, so ideal for access to the many local shops and supermarkets as well the park itself.

### Features

- Victorian Conversion
- 18ft Open Plan Reception
- Two Double Bedrooms
- Two Bathrooms
- Private Garden
- No Chain

# Ostade Road, London, SW2



Total area (approx.): 66.1 sq. m (711.4 sq. ft)  
(Including Cellar)