



Fairbourne Road, SW4

£425,000

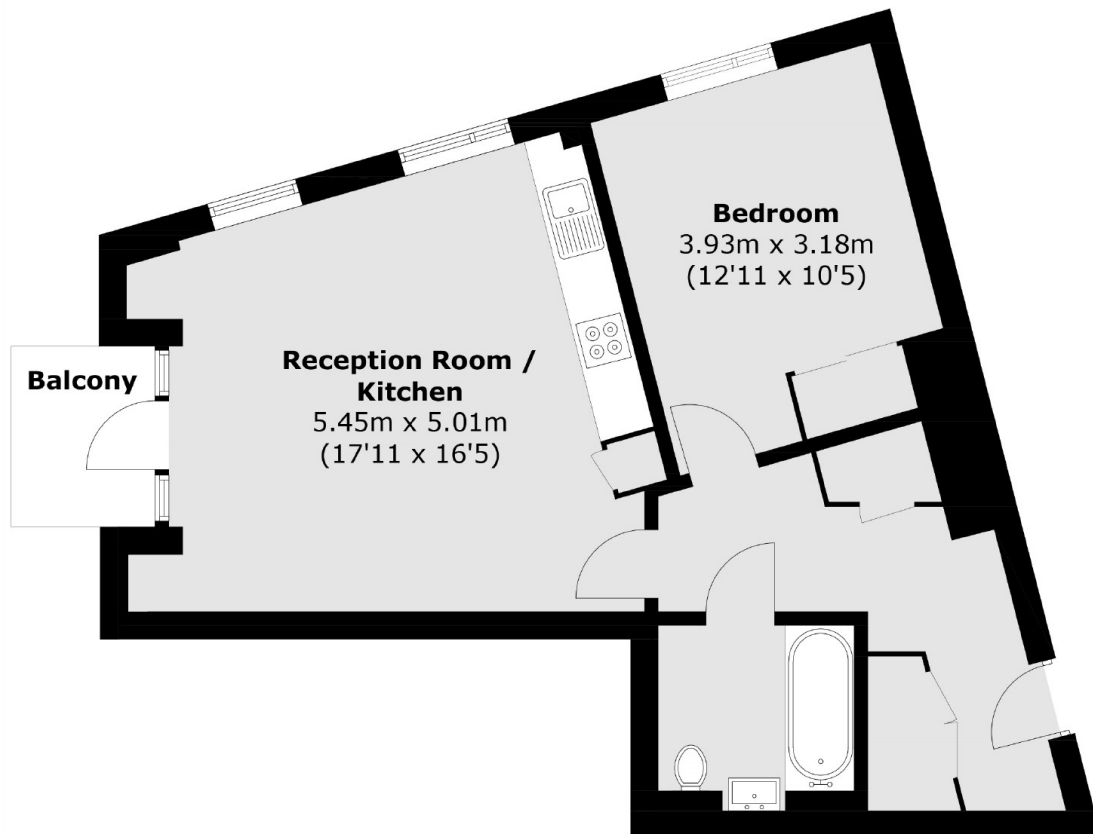
An impressive third-floor modern, lateral apartment situated within a desirable, development. The flat extends to a generous 579 sq.ft and benefits from a South-West facing private balcony. The naturally bright and airy accommodation comprises an open plan reception room with a contemporary kitchen and ample room to entertain, a double bedroom and a modern bathroom.

Fairbourne Road is situated on the Kings Avenue, conveniently located for easy access to Clapham High Street, Abbeville Village and Brixton, nearby transport links include Clapham Common (Northern line) and Brixton (Victoria line).

Features

- Modern Apartment
- Lift Access
- Private Balcony
- Long Lease
- Communal Courtyard
- EWS1 Granted

Fairbourne Road, London, SW4



Total area (approx.): 53.8 sq. m (579.1 sq. ft)
Balcony: 3.1 sq. m (33.4 sq. ft)