



## Abbeville Road, SW4

£399,950

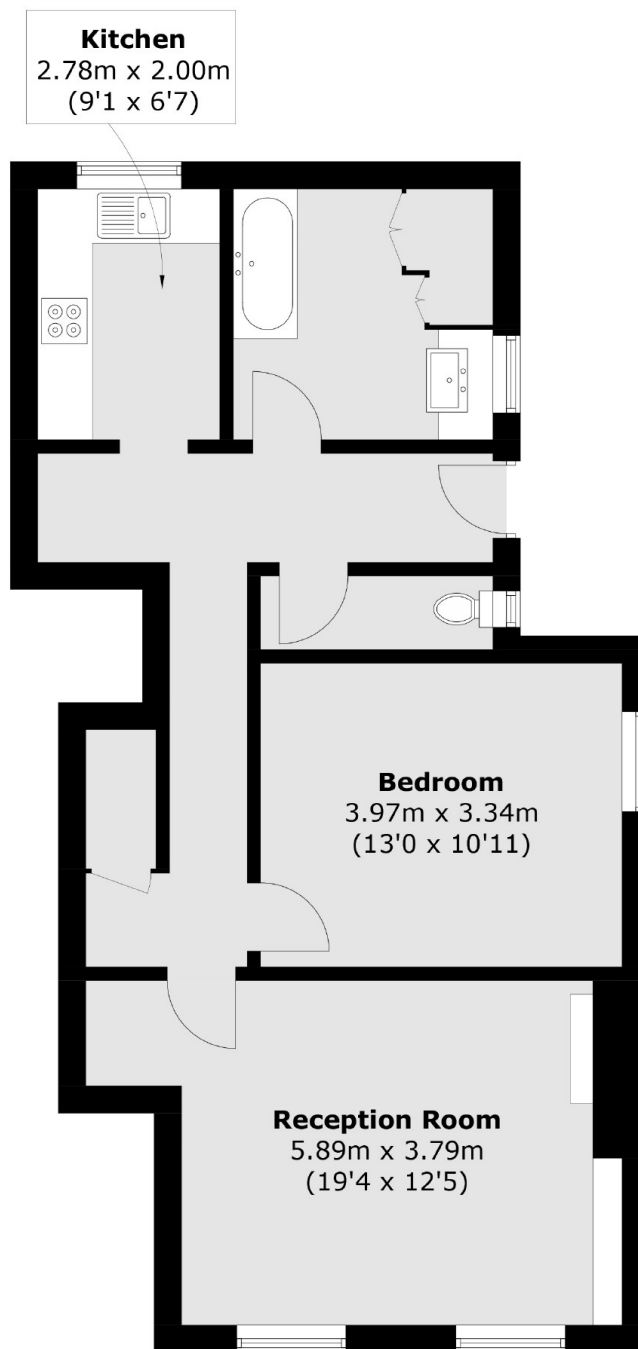
An excellent ground floor period conversion extending to an impressive 690 sq.ft, comprising a large reception room, a separate well-equipped kitchen, a double bedroom and a bathroom. Outside there is a communal garden and off-street parking on a first-come, first-served basis.

Abbeville Road is a tree lined street moments from the many local shops, restaurants and bars of Abbeville Village, with Clapham South & Common stations, along with the common itself just a short stroll away.

### Features

- Period Conversion
- Large Reception Room
- Separate Kitchen
- Communal Garden
- Share Of Freehold
- Chain Free

# Abbeville Road, London, SW4



Total area (approx.): 64.1 sq. m (690.0 sq. ft)

## Dexters

Clapham Sales  
28 Abbeville Road  
London  
SW4 9NG  
Sales  
020 8742 4140

Energy Rating: D. We aim to make our particulars both accurate and reliable. However they are not guaranteed; nor do they form part of an offer or contract. If you require clarification on any points then please contact us, especially if you're traveling some distance to view. Please note that appliances and heating systems have not been tested and therefore no warranties can be given as to their good working order.

 **RICS** | Regulated  
Estate Agent  
and Letting Agent

[dexters.co.uk](http://dexters.co.uk)