



Rosebery Road, SW2

£550,000

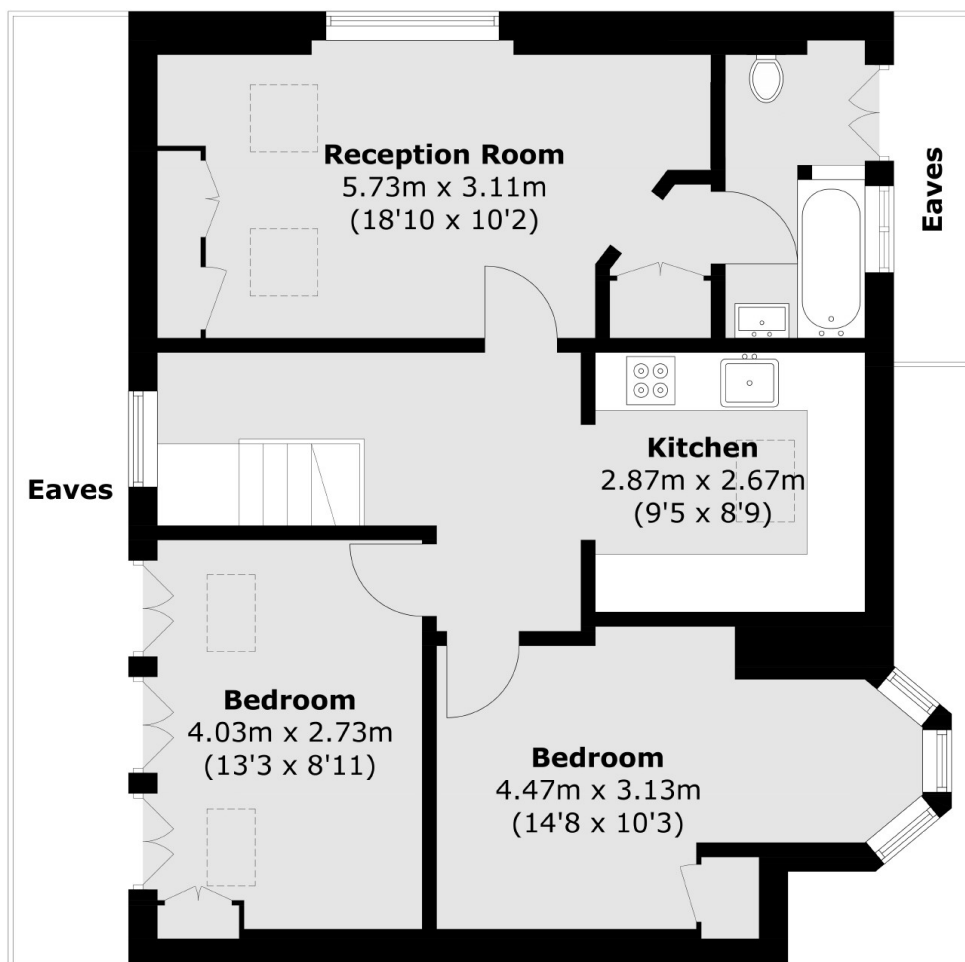
Having been refurbished to a high and tasteful standard throughout, this top-floor period conversion blends functional living with a contemporary design. The accommodation comprises a spacious reception room with ample room to dine, a separate kitchen which includes a range of integrated appliances, two double bedrooms with storage and a modern bathroom.

Rosebery Road is a quiet residential street within easy reach of Clapham and Brixton. Clapham Common/ Clapham North (Northern Line) and Brixton (Victoria Line and National Rail) Underground Stations are within close proximity. Abbeville Village is also located a short walk away with many local shops, restaurants and cafés.

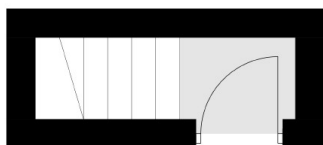
Features

- Bright Reception Room
- Modern Kitchen
- Two Bedrooms
- Share Of Freehold
- Cellar Storage
- Chain Free

Rosebery Road, London, SW2



Second Floor



First Floor

Total area (approx.): 71.3 sq. m (767.4 sq. ft)
(Excluding Eaves)