



Clarence Avenue, SW4

£799,999

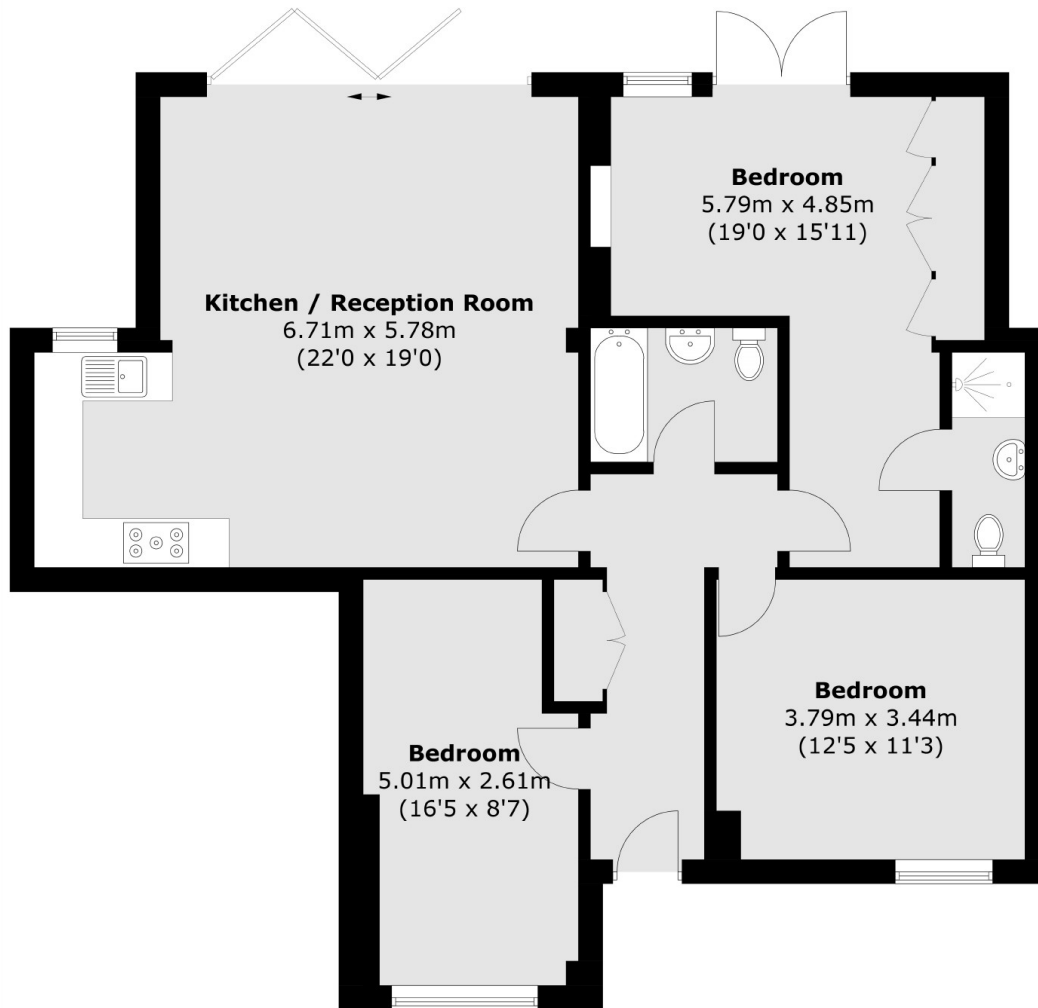
A beautifully refurbished and architecturally distinctive property, built in the 1970's, which has three bedrooms, two bathrooms, spacious open plan reception room, garden and off street parking.

The property is located in a quiet cul-de-sac within walking distance of Clapham South underground station and the shops, bars and restaurants on the popular Abbeville Road.

Features

- 1062 sq ft
- Own Front Door
- 22 ft Reception/Kitchen
- Three Double Bedrooms
- Two Bathrooms
- Private Garden

Clarence Avenue, London, SW4



Total area (approx.): 98.7 sq. m (1,062.4 sq. ft)