



## Carpenters Place, SW4

£760,000

A desirable modern apartment situated within a contemporary small-scale development moments from Clapham Old Town. Combining balanced living entertaining space over an impressive 1,065 sq.ft, the property comprises a large open-plan reception room with a well-equipped kitchen, three double bedrooms, two bathrooms and a balcony.

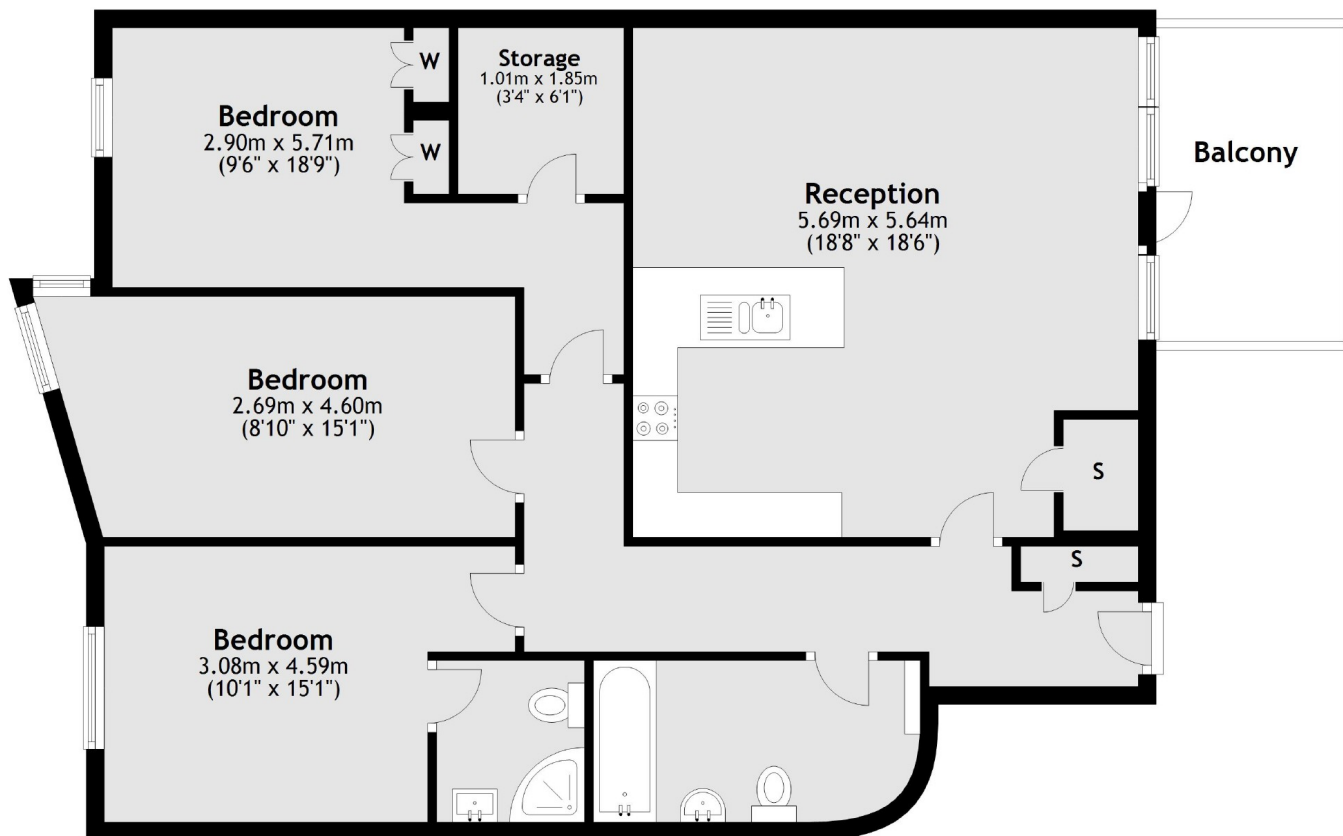
Carpenters Place is located just off Clapham High Street which is renowned for its many bars, restaurants & coffee shops, with exceptional transport links into the City via Clapham Common & Clapham North stations (Northern Line).

### Features

- Modern Apartment
- Open Plan Reception
- Three Bedrooms
- Two Bathrooms
- Balcony
- Chain Free

# Carpenters Place, London, SW4

## Second Floor



Total area: approx. 98.9 sq. metres (1065.0 sq. feet)