



Doverfield Road, SW2

£475,000

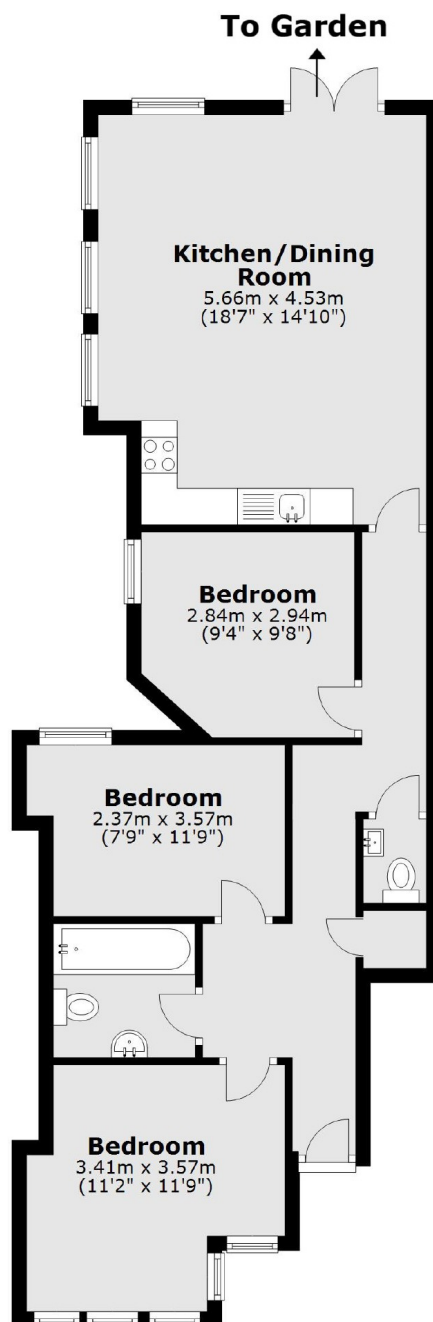
A ground floor period maisonette with a private garden, comprising a spacious open-plan reception room, three double bedrooms, a bathroom and a cloakroom.

Doverfield Road is extremely well located just off Brixton Hill and Kings Avenue, moments from the Abbeville Village. Central Clapham and Brixton with their respective stations (Northern & Victoria Lines) are easily reachable via numerous local bus routes.

Features

- Period Maisonette
- Open Plan Reception Room
- Three Double Bedrooms
- Private Garden
- Chain Free
- Long Lease

Doverfield Road, London, SW2



Total area: approx. 69.8 sq. metres (751.3 sq. feet)