



## Savoy Mews, SW9

£795,000

This contemporary apartment is set within a sought-after, private gated development that provides generous living and entertaining space thoughtfully arranged over three floors. Comprising a spacious open-plan reception room with an adjoining, well-equipped kitchen, two double bedrooms, two bathrooms, ample storage and two balconies.

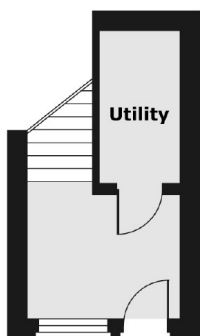
Savoy Mews is located a short walk from Clapham's many shops, bars and restaurants, with Clapham North (Northern Line) and Stockwell (Victoria Line) Stations just around the corner.

### Features

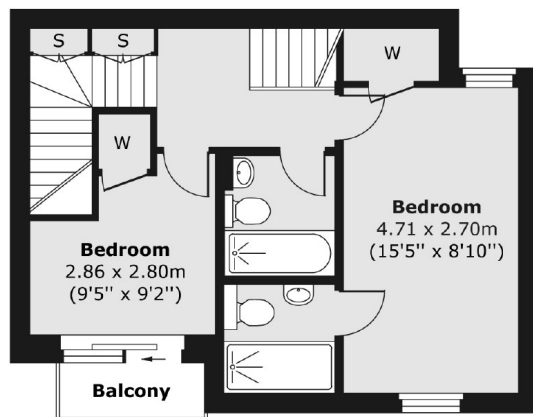
- Open Plan Reception
- Modern Kitchen
- Four Bedrooms
- Three Bathrooms
- Roof Terrace
- Allocated Parking

# Savoy Mews, London, SW9

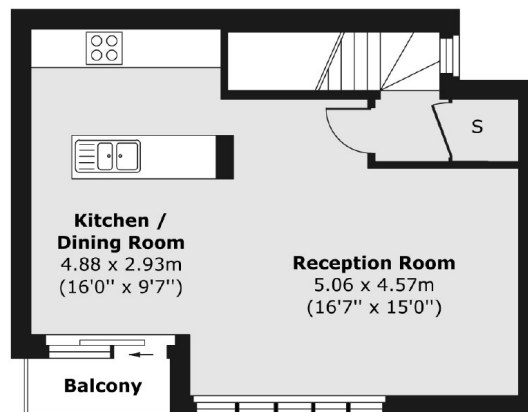
Ground Floor



First Floor



Second Floor



Total area (approx.) 87.22 sq. m (939 sq. ft)  
Balcony area (approx.) 3.86 sq. m (41 sq. ft)