



St. Saviour's Road, SW2

£699,950

Dexters



St. Saviour's Road, SW2

This truly unique split-level period conversion fuses living and entertaining space seamlessly after being refurbished to an extremely high and precise standard throughout. Moving from the entrance you are greeted by an inspiring reception room with a double-height, valuated ceiling, overlooked by a raised mezzanine, a highly versatile and usable space.

The well-equipped kitchen includes a range of appliances and ample room for dining. A double bedroom with fitted wardrobes and a family bathroom complete the accommodation. Outside there is a communal, mature garden incorporating a seating area.

St. Saviour's Road is a quiet residential street situated a short distance away from central Brixton, an area renowned for its superb array of excellent shops, bars, restaurants and the famous 'Brixton Village'. Local transport links are excellent and include the Victoria Line and National Rail.

Features

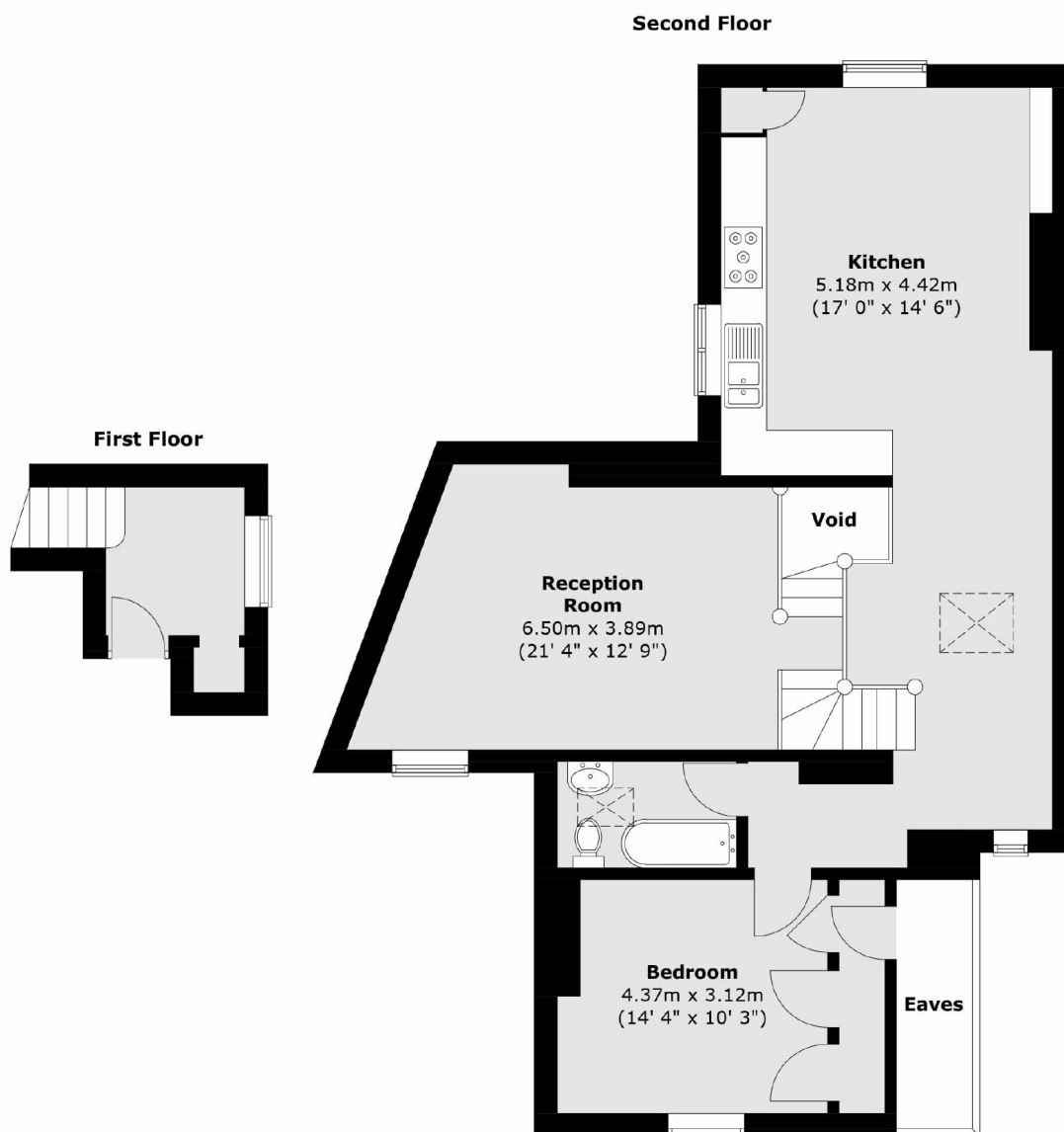
- Period Conversion
- Large Reception Room
- Kitchen/Breakfast Room
- Double Bedroom With Storage
- Communal Garden
- Share Of Freehold







St. Saviour's Road, London, SW2



Total area (approx.) : 83.2 sq. m (896 sq. ft)
(Excluding Eaves)