



Lambourn Road, SW4

£415,000

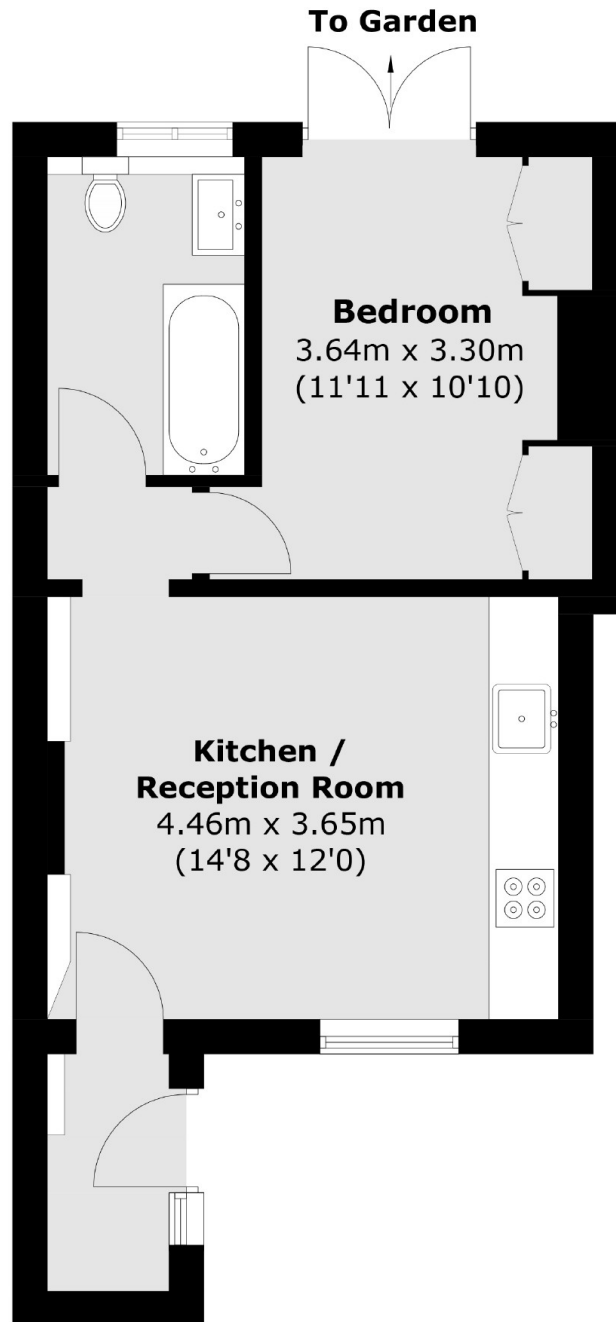
This superb ground floor period conversion is finished to a high and tasteful standard, provides balanced living and entertaining space and has a private, south-west facing garden. Comprising a spacious reception room with a well-equipped, integrated kitchen, a double bedroom with two large fitted wardrobes and a bathroom.

Lambourn Road is located in Clapham Old Town, a highly desirable area renowned for its many shops, bars and restaurants. Clapham Common, along with its Underground station (Northern Line) and Wandsworth Road Overground station are a short stroll away.

Features

- Period Conversion
- Open Plan Reception Room
- Modern Kitchen
- Double Bedroom With Storage
- Private Garden
- Chain Free

Lambourn Road, London, SW4



Total area (approx.): 36.7 sq. m (395.0 sq. ft)

Dexters

Clapham Sales
28 Abbeville Road
London
SW4 9NG
Sales
020 8742 4140

Energy Rating: C. We aim to make our particulars both accurate and reliable. However they are not guaranteed; nor do they form part of an offer or contract. If you require clarification on any points then please contact us, especially if you're traveling some distance to view. Please note that appliances and heating systems have not been tested and therefore no warranties can be given as to their good working order.

 **RICS** | Regulated
Estate Agent
and Letting Agent

dexters.co.uk