



Dryden Close, SW4

£799,950

An architecturally impressive ground floor apartment providing an abundance of contemporary living and entertaining space with allocated parking and a private garden. Comprising a vast open plan reception room with a vaulted ceiling, ample room to dine and a modern kitchen, two double bedrooms, two bathrooms and a cloakroom.

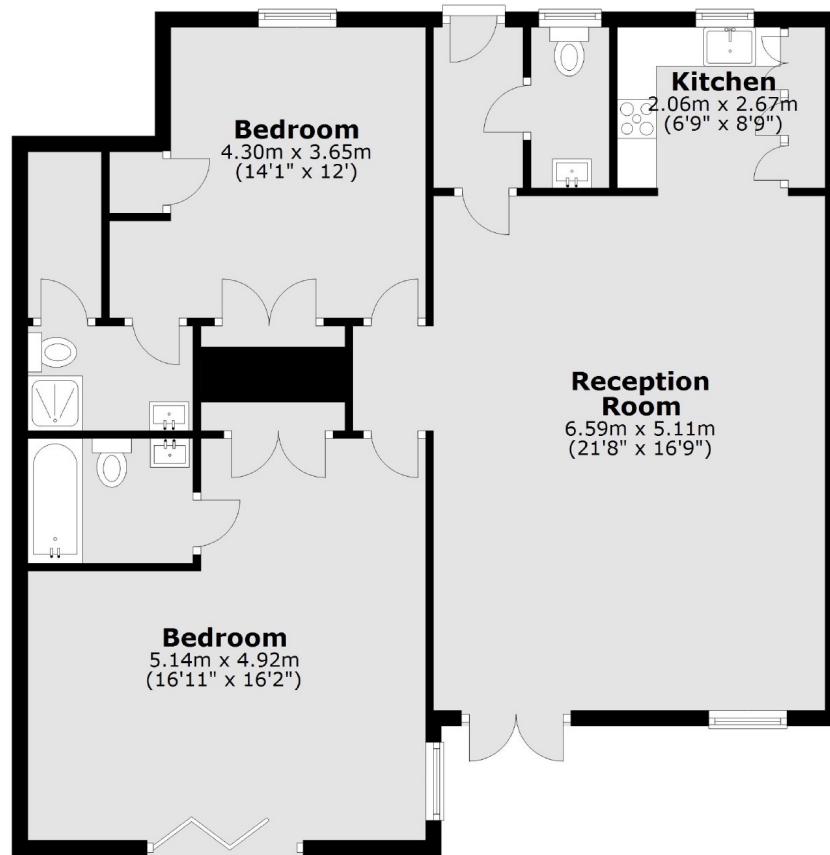
Dryden Close represents a small community of highly desirable homes positioned within a small, private development located in the Abbeville Village, an area renowned for its array of shops, bars and restaurants. Clapham Common, along with its respective station (Northern Line) is a short walk away.

Features

- Private Entrance
- Open Plan Reception
- Two Bedrooms
- Two Bathrooms
- Private Parking
- Garden

Dryden Close, London, SW4

Ground Floor



Total area: approx. 94.9 sq. metres (1021.2 sq. feet)