

Tasman Road, SW9

£850,000

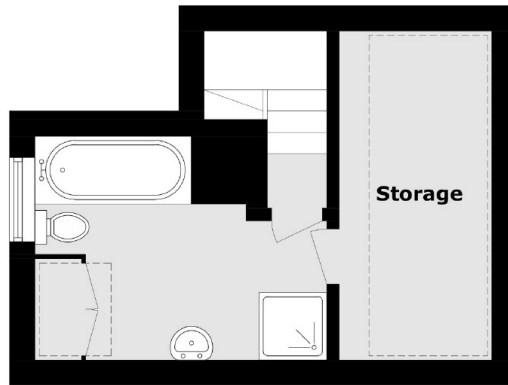
A rare and exciting opportunity to purchase an end-of-terrace home naturally arranged over three floors with outside space and off-street parking. Comprising a reception room, a well-equipped kitchen/breakfast room, two well-proportioned double bedrooms and a bathroom.

Tasman Road is a quiet residential street, ideally located for easy access to the many restaurants, shops and bars of Clapham & Brixton. Clapham North, Stockwell & Brixton stations are just a short stroll away.

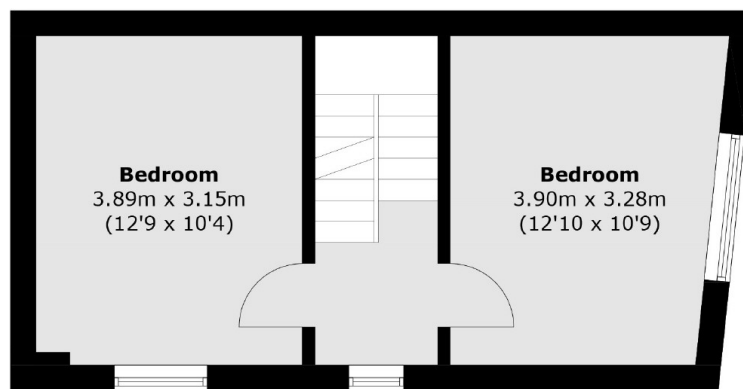
Features

- Reception Room
- Kitchen/Breakfast Room
- Two Double Bedrooms
- Outside Space
- Off-Street Parking
- Storage Space

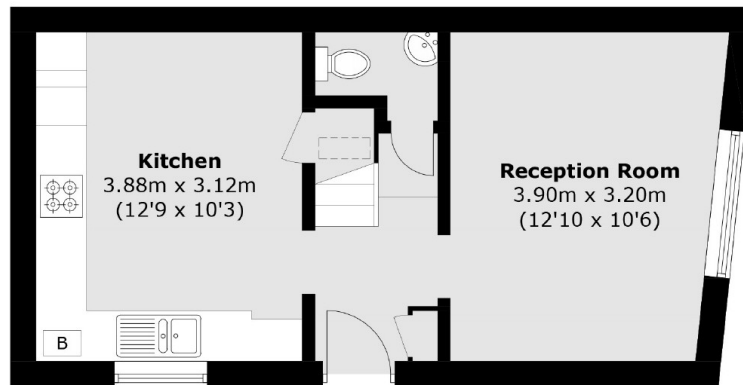
Tasman Road, London, SW9



Second Floor



First Floor



Ground Floor

Total area (approx.): 81.1 sq. m (872.9 sq. ft)