



## Cavendish Road, SW12

£650,000

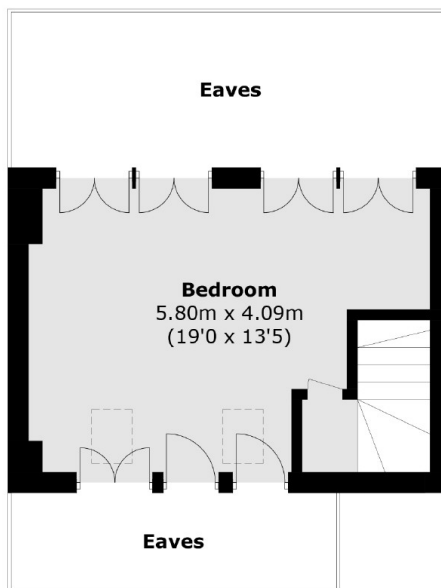
An exceptional split-level period conversion arranged over the upper floors of an impressive Victorian property. Having been refurbished throughout to a high and tasteful standard the apartment blends contemporary living with functional space perfectly. Comprising a vast 18 ft reception room with an adjoining modern kitchen, two double bedrooms and a bathroom.

Cavendish Road provides excellent access to the many shops, bars and restaurants of Balham High Road, the Nightingale Triangle and Abbeville Village, Balham Underground and Overground stations are a very short walk away.

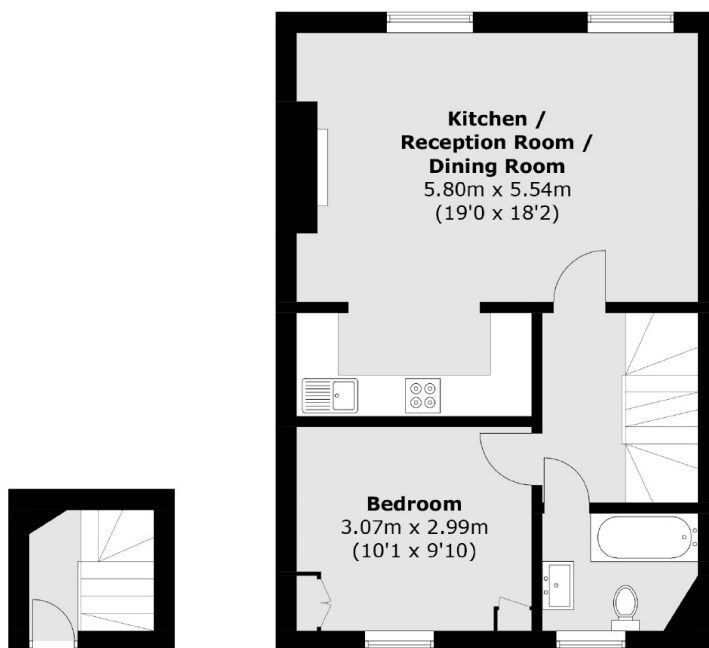
### Features

Split Level Period Conversion  
Open Plan Reception Room  
Modern Kitchen

# Cavendish Road, London, SW12



**Third Floor**



**First Floor**

**Second Floor**

Total area (approx.): 78.2 sq. m (841.6 sq. ft)  
(Excluding Eaves)