



Cedars Road, SW4

£550,000

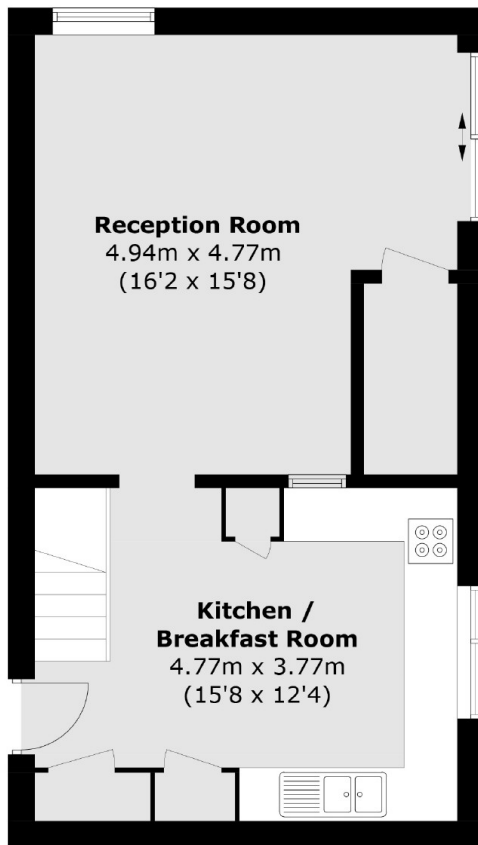
A very spacious and well-presented three bedroom split-level maisonette, ideally located on Cedars Road within moments of Clapham Common. Comprising a generous kitchen with space to dine and a bright reception room with direct access onto a private patio garden.

Cedars Road is within moments of the wide open spaces of Clapham Common and within close proximity of Clapham Common tube and Clapham Old Town with its array of café's, shops, bars and restaurants.

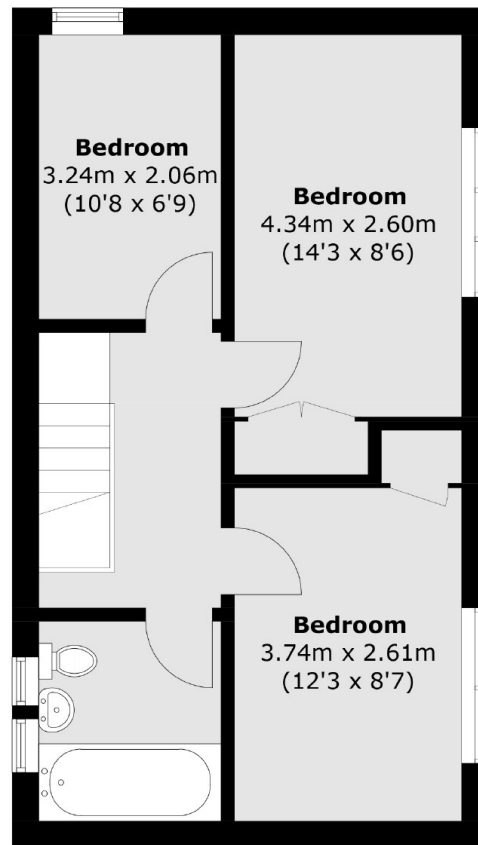
Features

- Spacious Maisonette
- Three Double Bedrooms
- Private Patio Garden
- Close to Clapham Common
- Excellent Transport Links
- Chain free

Cedars Road, London, SW4



Ground Floor



First Floor

Total area (approx.): 84.4 sq. m (908.5 sq. ft)