



Ashmere Grove, SW2

£525,000

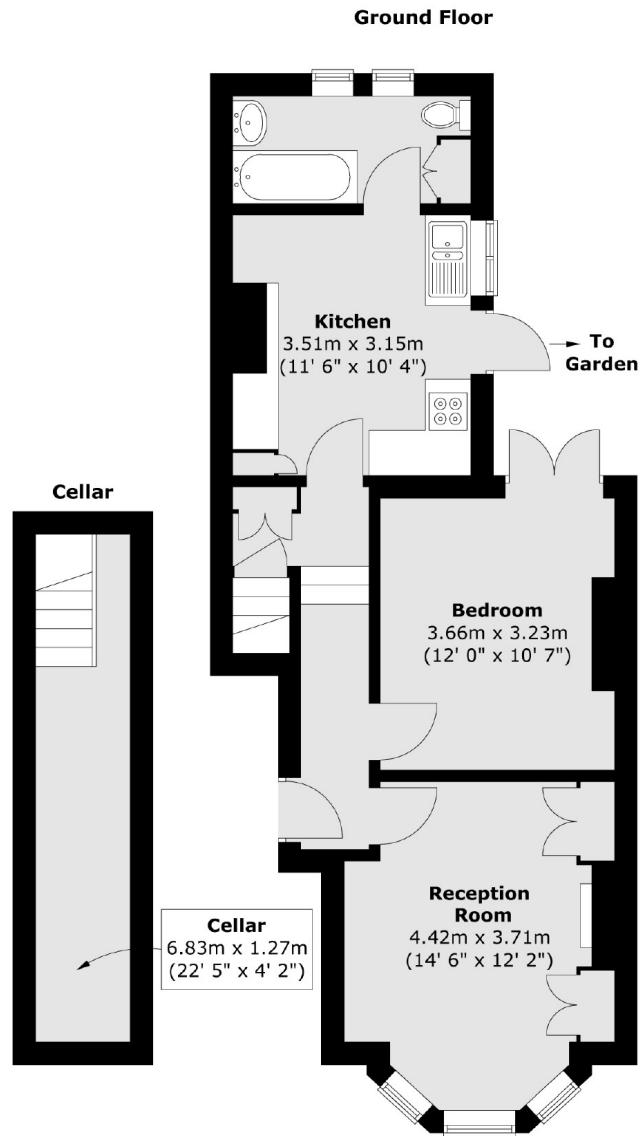
A ground-floor period conversion providing an abundance of balanced living and entertaining space, comprising a bright and airy reception room with a bay window, a separate, well-equipped kitchen, a double bedroom and a bathroom. Outside there is a private garden. The property also has the potential for side return extension (STPP).

Ashmere Grove is located in a residential area nestled between Clapham and Brixton and is within easy reach of many local amenities. Several transport options are available nearby including Northern Line, Victoria Line & Overground Services.

Features

- Ground Floor Conversion
- Reception Room
- Kitchen/Breakfast Room
- Double Bedroom
- Long Lease
- Potential To Extend (STPP)

Ashmere Grove, London, SW2



Total area (approx.) : 59.7 sq. m (642 sq. ft)