



Kings Avenue, SW4

£435,000

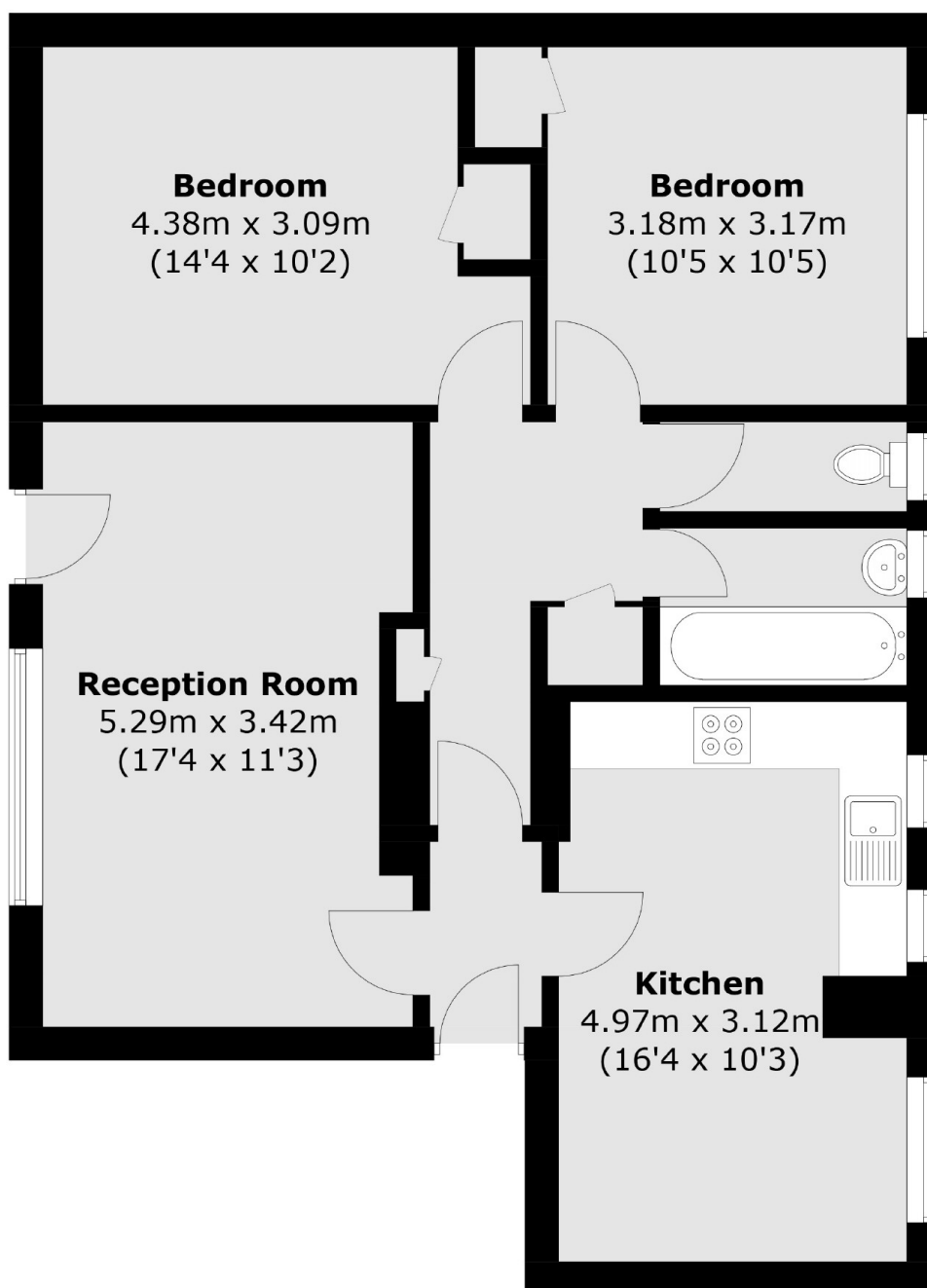
This spacious, lateral apartment is situated on the third floor of a smart, purpose-built development and represents an excellent opportunity for first-time buyers and investors alike. The property extends to a generous 797 sq.ft and comprises a 17 ft reception room with ample room to dine and a Juliette balcony that overlooks the large communal garden, a separate well-equipped kitchen, two double bedrooms and a bathroom.

Kings Quarter is situated on the Kings Avenue, conveniently located for easy access to Clapham High Street, Abbeville Village and Brixton, nearby transport links include Clapham Common (Northern line) and Brixton (Victoria line).

Features

- Large Reception Room
- Kitchen/Breakfast Room
- Two Bedrooms
- Chain Free
- Communal Garden
- Long Lease

Kings Avenue, London, SW4



Total area (approx.): 74.1 sq. m (797.6 sq. ft)