

## Oaklands Estate, SW4

£275,000

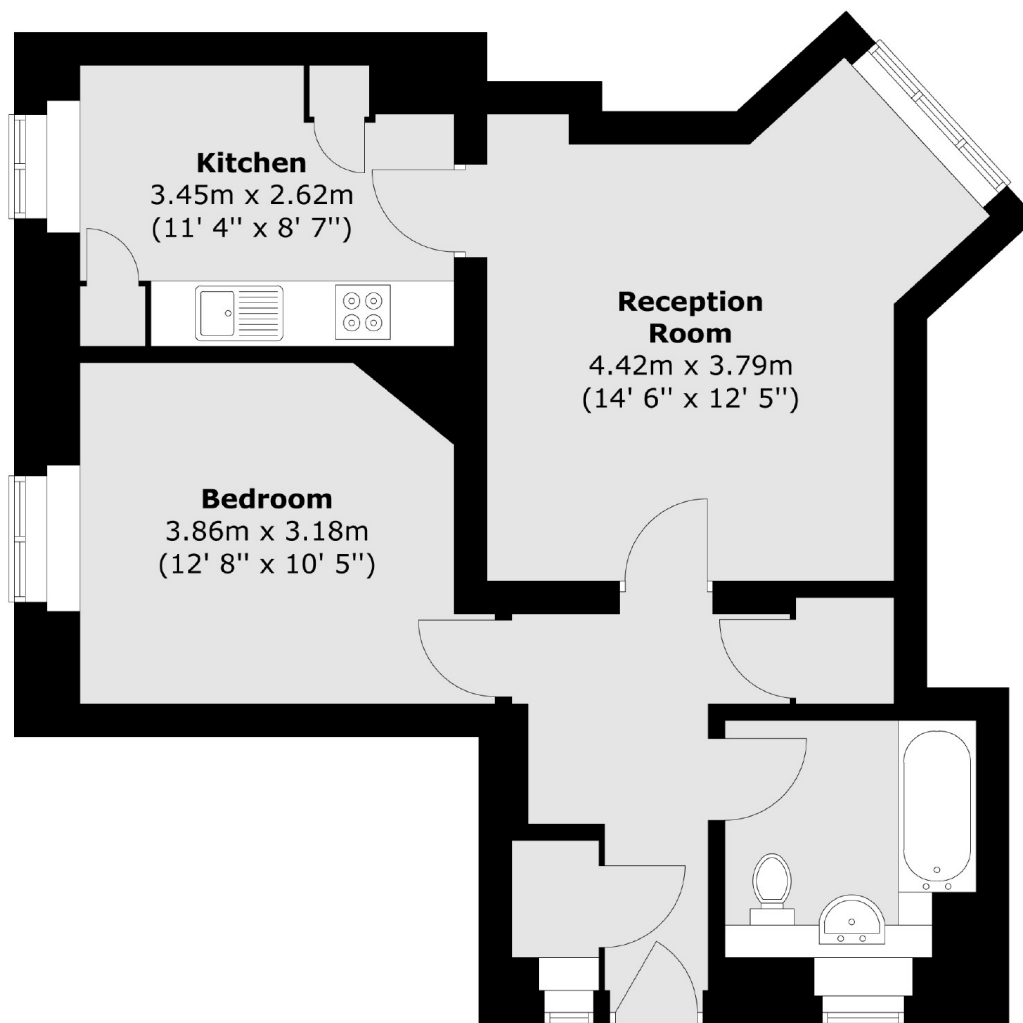
A contemporary ground-floor apartment presented in excellent order throughout, comprising a spacious reception room, a separate, well-equipped kitchen, a double bedroom and a bathroom.

Eastman House is conveniently located close to the areas many local amenities, with access to Clapham Common Park and the popular Abbeville Village.

### Features

- Apartment
- Reception Room
- Separate Kitchen
- Double Bedroom
- Chain Free
- Long Lease

# Oaklands Estate, London, SW4



Total area (approx.) : 54.3 sq. m (584 sq. ft)