



Worsopp Drive, SW4

£425,000

A contemporary apartment extending to 700 sq.ft over two floors, comprising a bright reception room with an adjoining balcony, a separate kitchen, two double bedrooms and a bathroom.

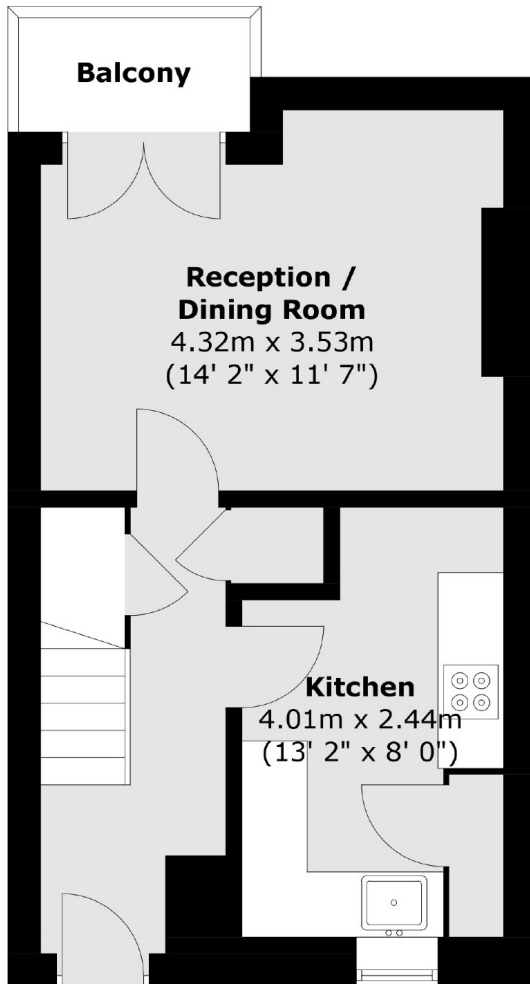
Worsopp Drive is located close to the many local shops, restaurants and cafés of Abbeville Village & Clapham High Street, with the green open spaces of Clapham Common and its Underground station (Northern Line) on your doorstep.

Features

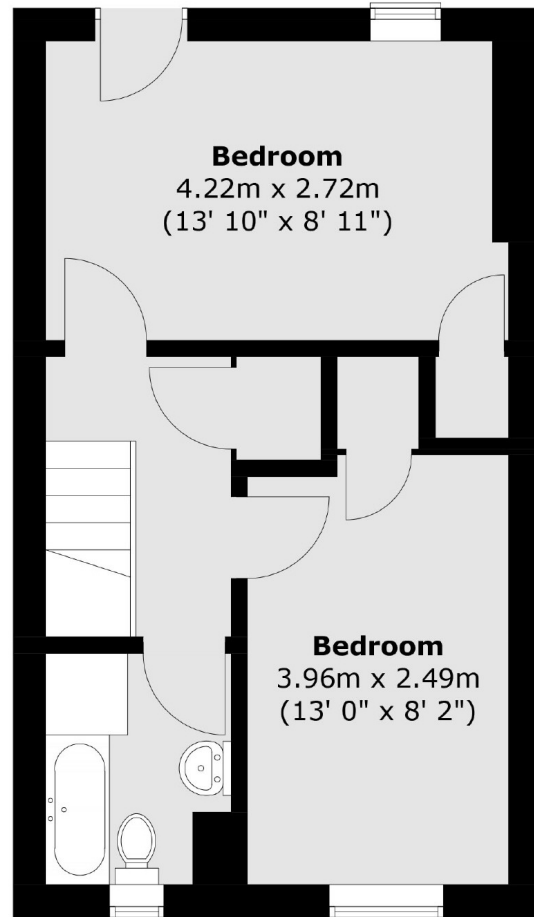
- Split Level Apartment
- Large Reception Room
- Separate Kitchen
- Two Double Bedrooms
- Bathroom
- Balcony

Worsopp Drive, London, SW4

Ground Floor



First Floor



Total area (approx.) : 67.1 sq. m (722 sq. ft)
Total balcony area (approx.) : 3.4 sq. m (37 sq. ft)