



## Gateley Road, SW9

£650,000

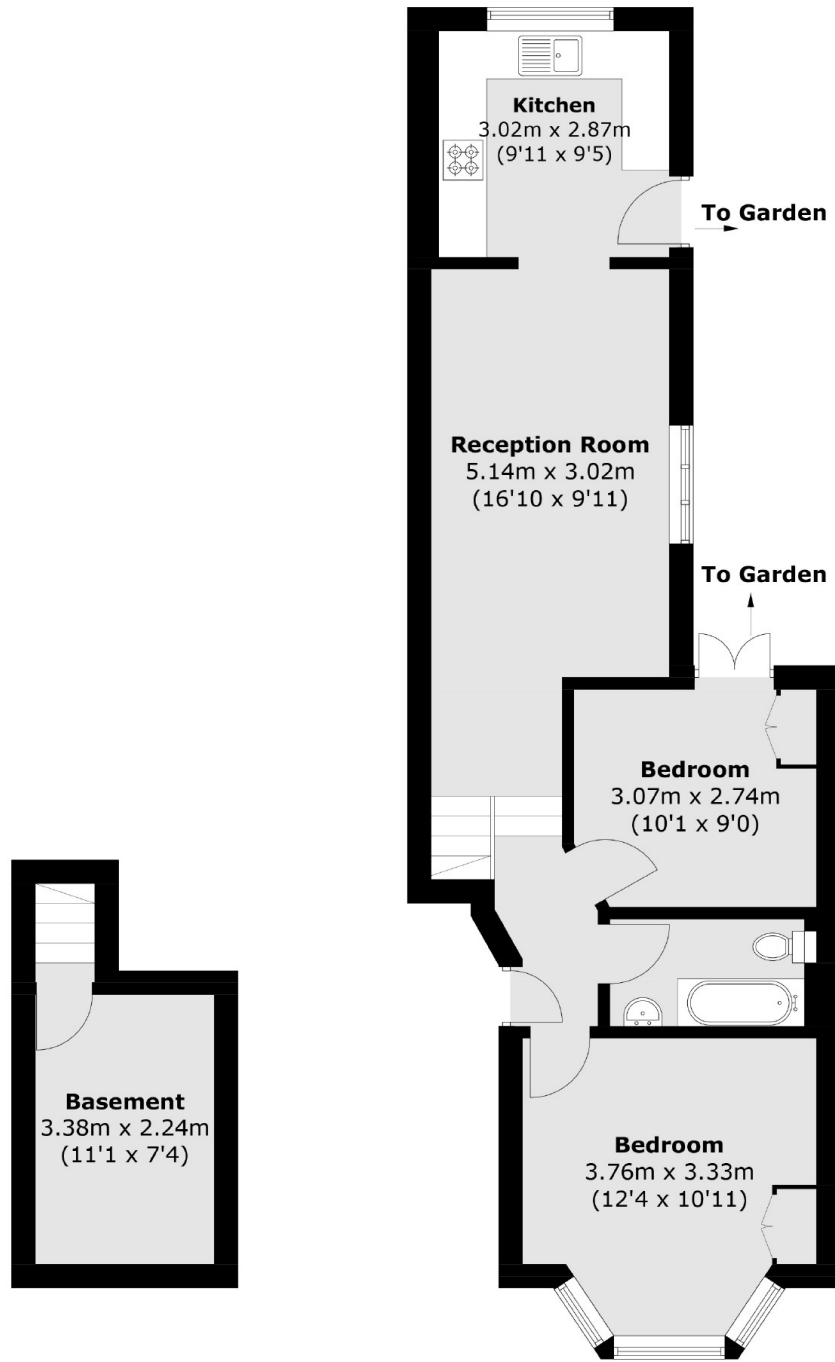
This charming ground-floor period conversion effortlessly blends comfort, style and functionality and boasts a mature, 30 ft private garden. The property comprises a spacious reception room, an adjoining modern kitchen with integrated appliances, two double bedrooms with fitted wardrobes, a contemporary bathroom and a tanked cellar, ideal for storage.

Gateley Road is ideally located for Brixton's many local shops bars and restaurants. Brixton, Stockwell & Clapham North stations are all just a short walk making The City and West End very accessible from both Northern & Victoria lines.

### Features

- Ground Floor Conversion
- Two Double Bedrooms
- Private Garden
- Share Of Freehold
- Potential for Side Return SPP
- Chain Free

# Gateley Road, London, SW9



**Basement**

**Ground Floor**

Total area (approx.): 65.5 sq. m (705.1 sq. ft)  
(Including Basement)