



## Branksome Road, SW2

£1,125,000

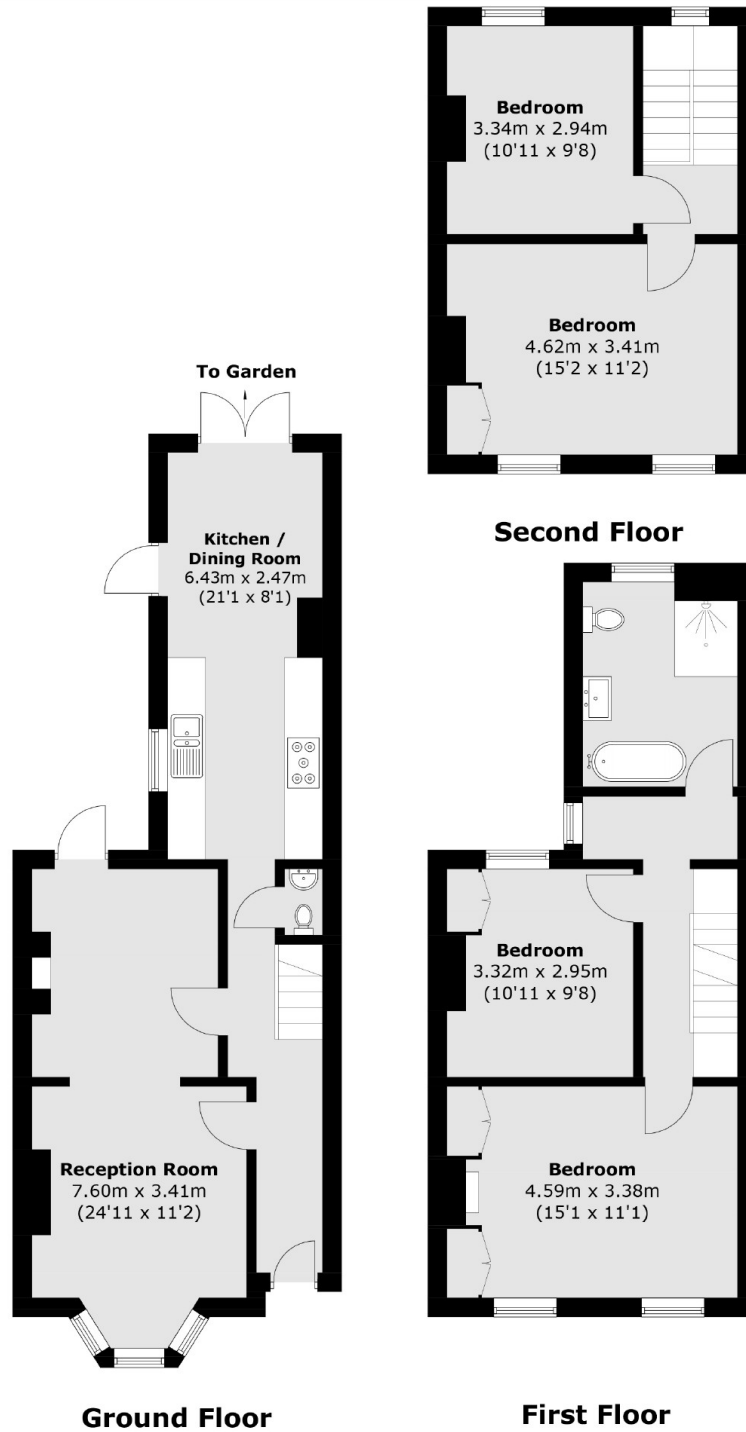
A mid terraced freehold home naturally arranged over three floors with a west facing garden. Comprising a double reception room with a bay window, a large, modern kitchen with ample room for dining, four double bedrooms and a family bathroom.

Branksome Road is a quiet residential street popular for its close proximity to the many superb shops, restaurants and bars of both Brixton and Clapham town centres. The green open spaces of Brockwell Park are close by, along with excellent transport links including the Victoria & Northern Lines.

### Features

- Freehold
- Double Reception Room
- Modern Kitchen
- Four Bedrooms
- Large Garden
- Chain Free

# Branksome Road, London, SW2



Total area (approx.): 122.4 sq. m (1,317.5 sq. ft)