



Hambalt Road, SW4

£925,000

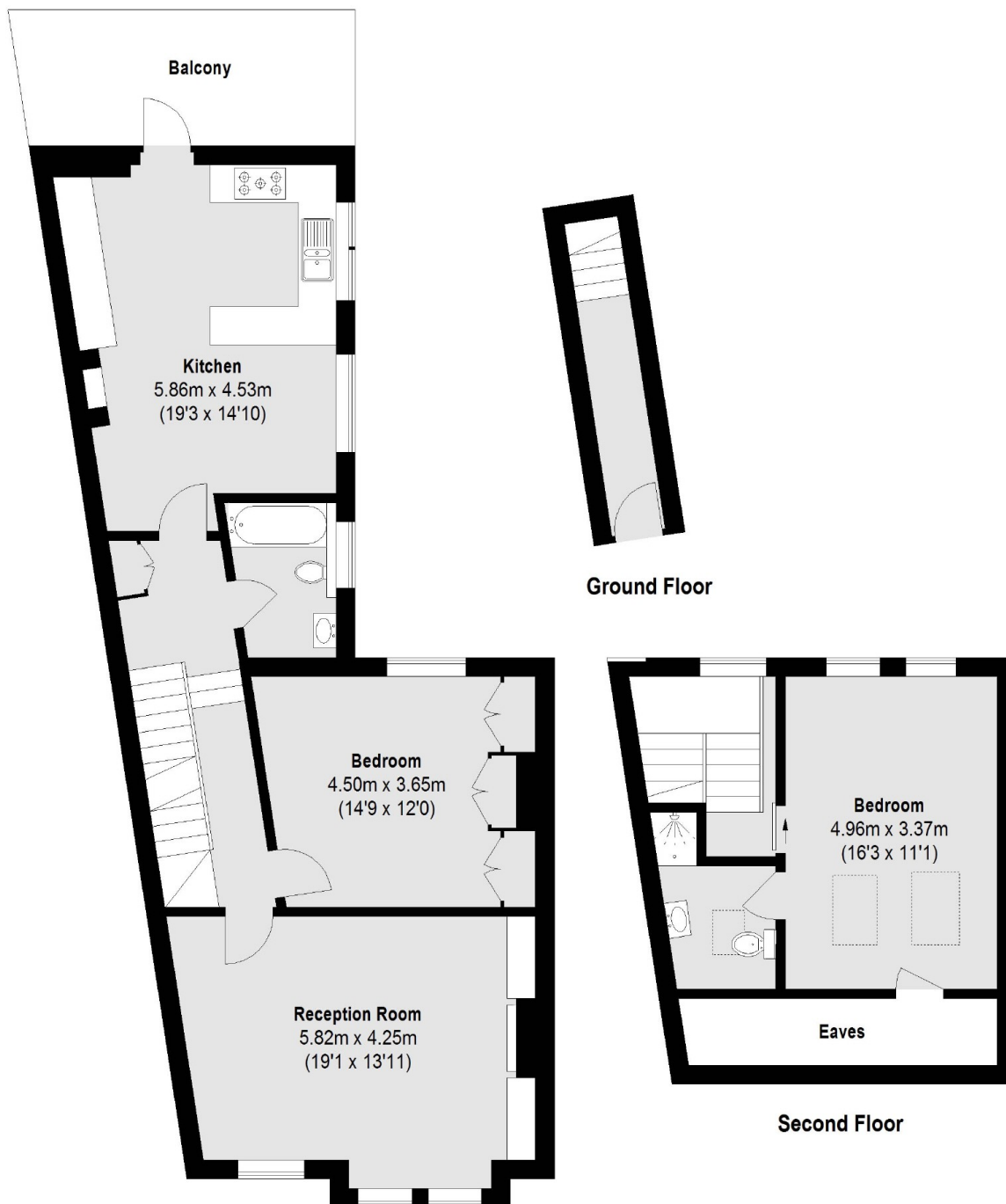
An immaculate end of terrace maisonette extending to a larger than average 1,168 sq.ft over two floors. Comprising a wide reception room with a bay window, original fireplace and bespoke cabinetry, a separate, modern kitchen/breakfast room with a vaulted ceiling and a range of integrated appliances that opens onto a sunny terrace, two bedrooms and two bathrooms.

Hambalt Road is a desirable tree-lined street in the Abbeville Village, an area renowned for its array of shops, bars and restaurants. Clapham Common and Clapham South stations (Northern Line) are just around the corner.

Features

- Period Maisonette
- Reception Room
- Kitchen/Breakfast Room
- Two Bedrooms
- Two Bathrooms
- Private Terrace

Hambalt Road, London, SW4



First Floor

Total area (approx.): 108.51 sq. m (1168 Sq. ft)
(Excluding Eaves)

Balcony: 11.44 sq. m (123 Sq. ft)

Dexters

Clapham Sales
28 Abbeville Road
London
SW4 9NG

Sales
020 8742 4140

Energy Rating: D. We aim to make our particulars both accurate and reliable. However they are not guaranteed; nor do they form part of an offer or contract. If you require clarification on any points then please contact us, especially if you're traveling some distance to view. Please note that appliances and heating systems have not been tested and therefore no warranties can be given as to their good working order.

 **RICS** Regulated
Estate Agent
and Letting Agent

dexters.co.uk