



Winterwell Road, SW2

£650,000

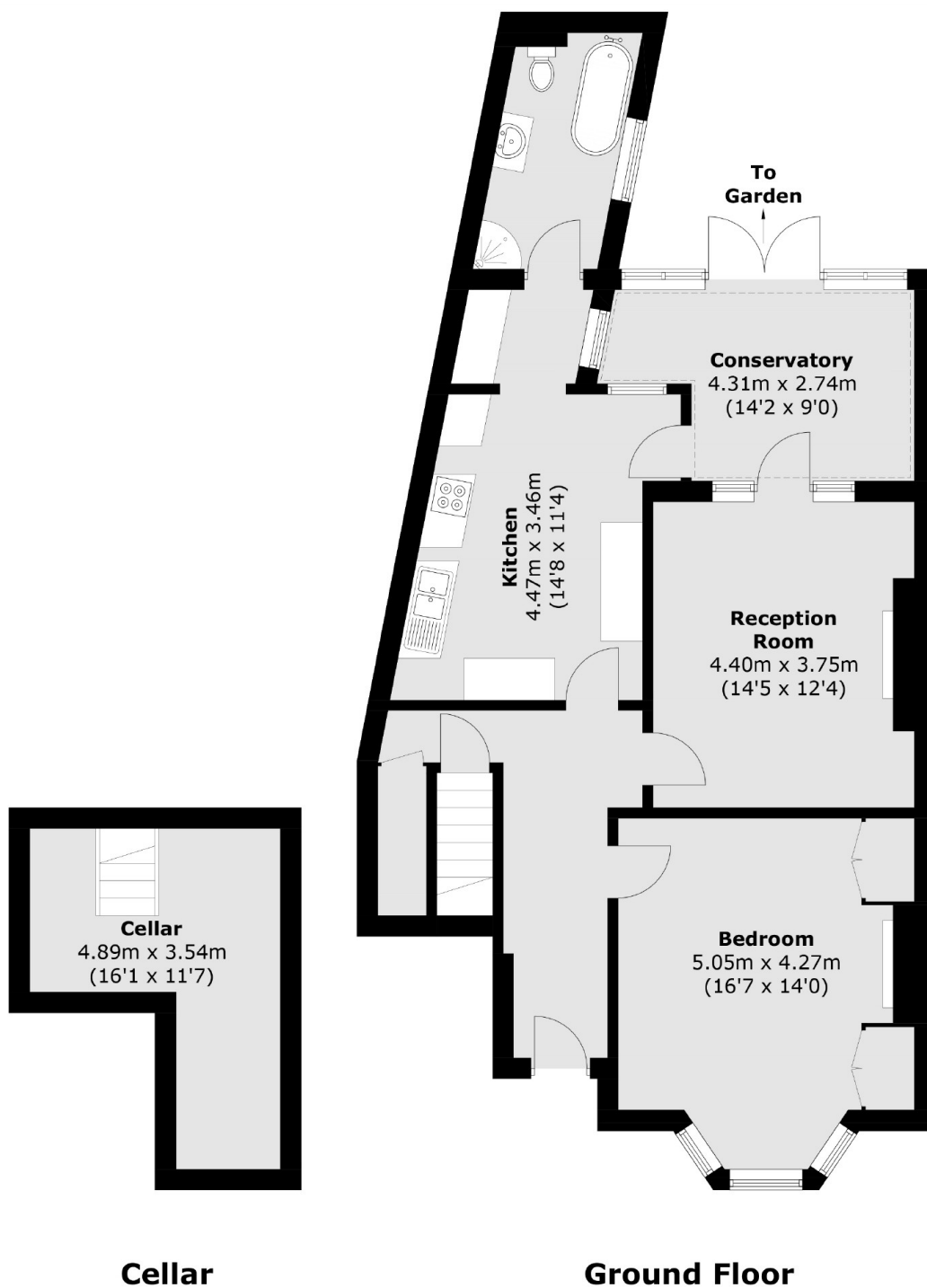
An outstanding ground floor period conversion with a private entrance, extending to an impressive 1,087 sq.ft with a 60 ft directly south-facing garden. Comprising a spacious reception room, an adjoining conservatory, a separate well-equipped kitchen, a double bedroom with fitted wardrobes and a bathroom.

Winterwell Road is a quiet residential street popular for its close proximity to the many superb shops, restaurants and bars of both Brixton and Clapham town centres. The green open spaces of Brockwell Park are close by, along with excellent transport links including the Victoria & Northern Lines.

Features

- Period Conversion
- Reception Room
- Separate Kitchen
- Double Bedroom
- South Facing Garden
- Cellar Storage

Winterwell Road, London, SW2



Total area (approx.): 101.0 sq. m (1,087.2 sq. ft)