



Lyham Road, SW2

£375,000

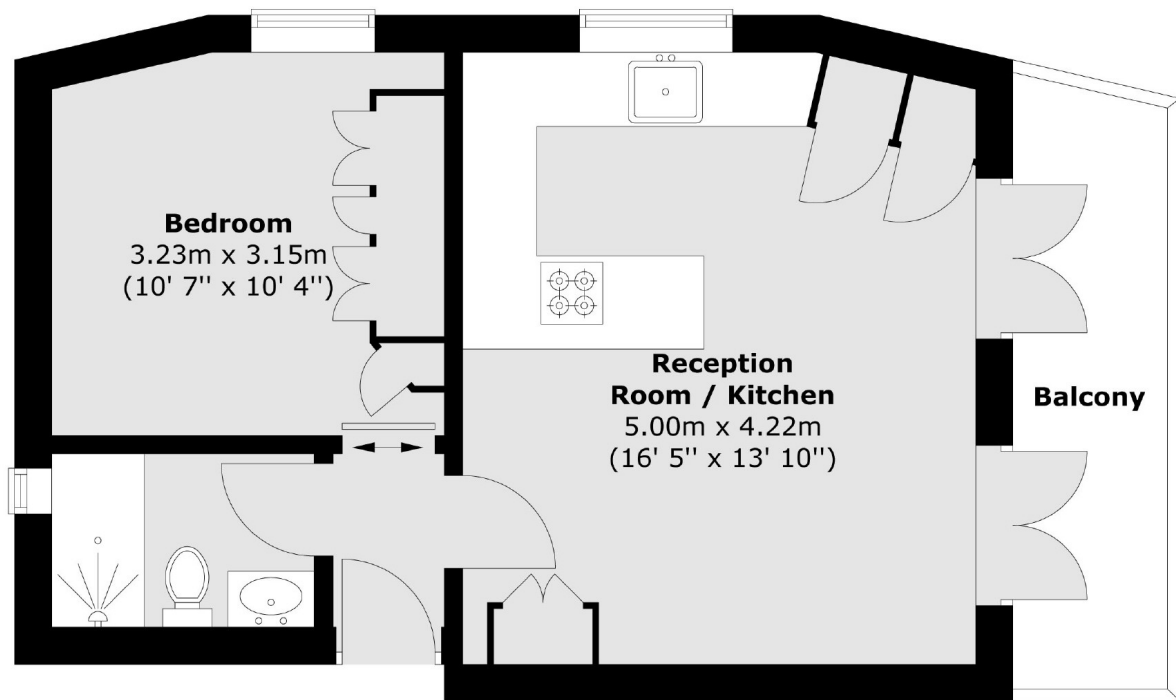
A bright and airy, immaculate first-floor apartment with an impressive, private balcony. Accommodation includes a large open plan reception room with an integrated kitchen, double bedroom with fitted wardrobes, and a modern bathroom.

Situated on the corner of Lyham Road & Crescent Lane, which offers direct access to the many local boutique shops, restaurants and bars of Abbeville Village, Clapham High Street is also just a short walk away. The flat also has fantastic proximity to Brixton tube and local shops.

Features

- Open Plan Reception
- Integrated Kitchen
- Double Bedroom
- Share Of Freehold
- Large Balcony

Lyham Road, London, SW2



Total area (approx.) : 37.5 sq. m (403 sq. ft)
Total balcony area (approx.) 5.8 sq. m (62 sq. ft)