



Ramilles Close, SW2

£575,000

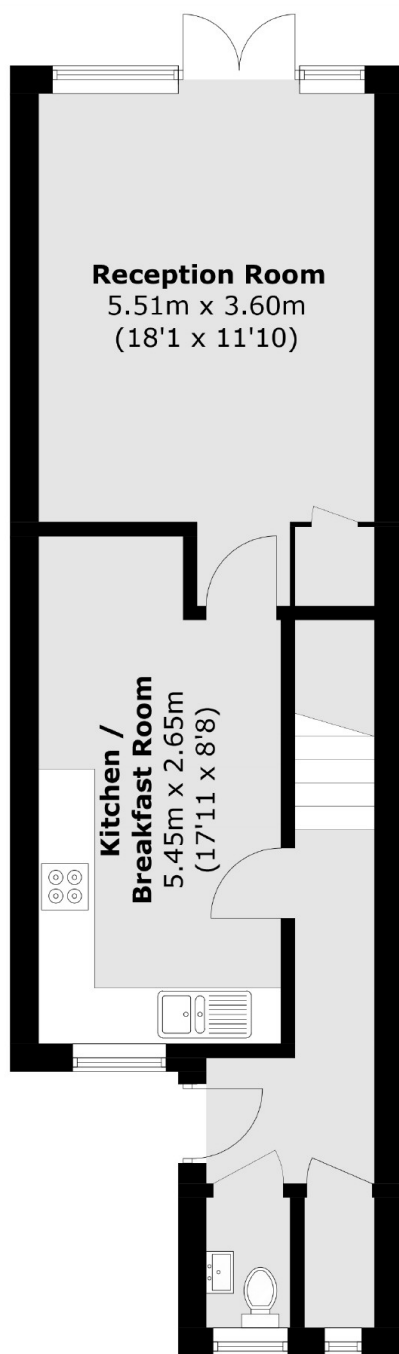
A rarely available freehold home presented in excellent condition throughout, providing an abundance of thoughtfully arranged living and entertaining space with a sizable garden. Comprising a spacious reception room, a separate, well equipped kitchen, two double bedrooms and a bathroom.

Ramilles Close provides great access to both Clapham & Brixton's many shops, bars and restaurants along with the wide open spaces of Clapham Common. Transport links include Clapham Common (Northern Line) and Brixton station (Victoria Line).

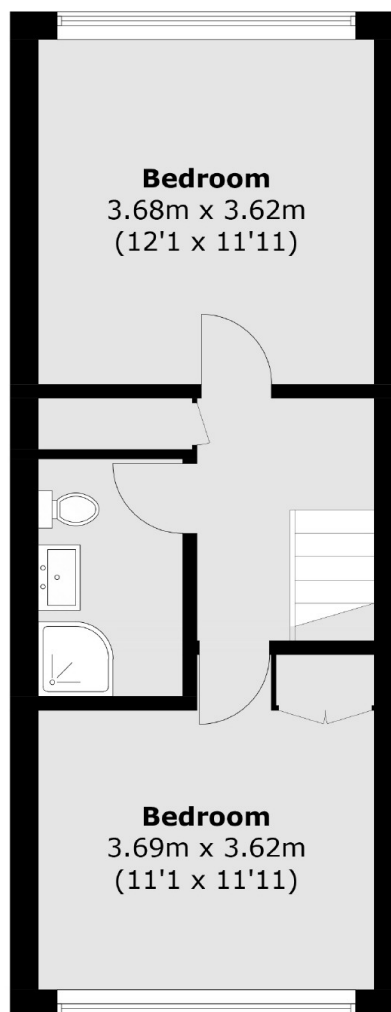
Features

- Freehold Home
- Large Reception Room
- Kitchen/Breakfast Room
- Two Bedrooms
- Bathroom & Cloakroom
- Garden

Ramilles Close, London, SW2



Ground Floor



First Floor

Total area (approx.): 79.2 sq. m (852.5 sq. ft)