



Thornbury Road, SW2

£495,000

An immaculately presented top-floor period conversion situated within an impressive end-of-terrace, double-fronted property. The thoughtfully arranged, naturally bright and airy living and entertaining space comprises a large reception room, a separate well-equipped kitchen, two double bedrooms and a bathroom, outside there is a well-maintained communal garden.

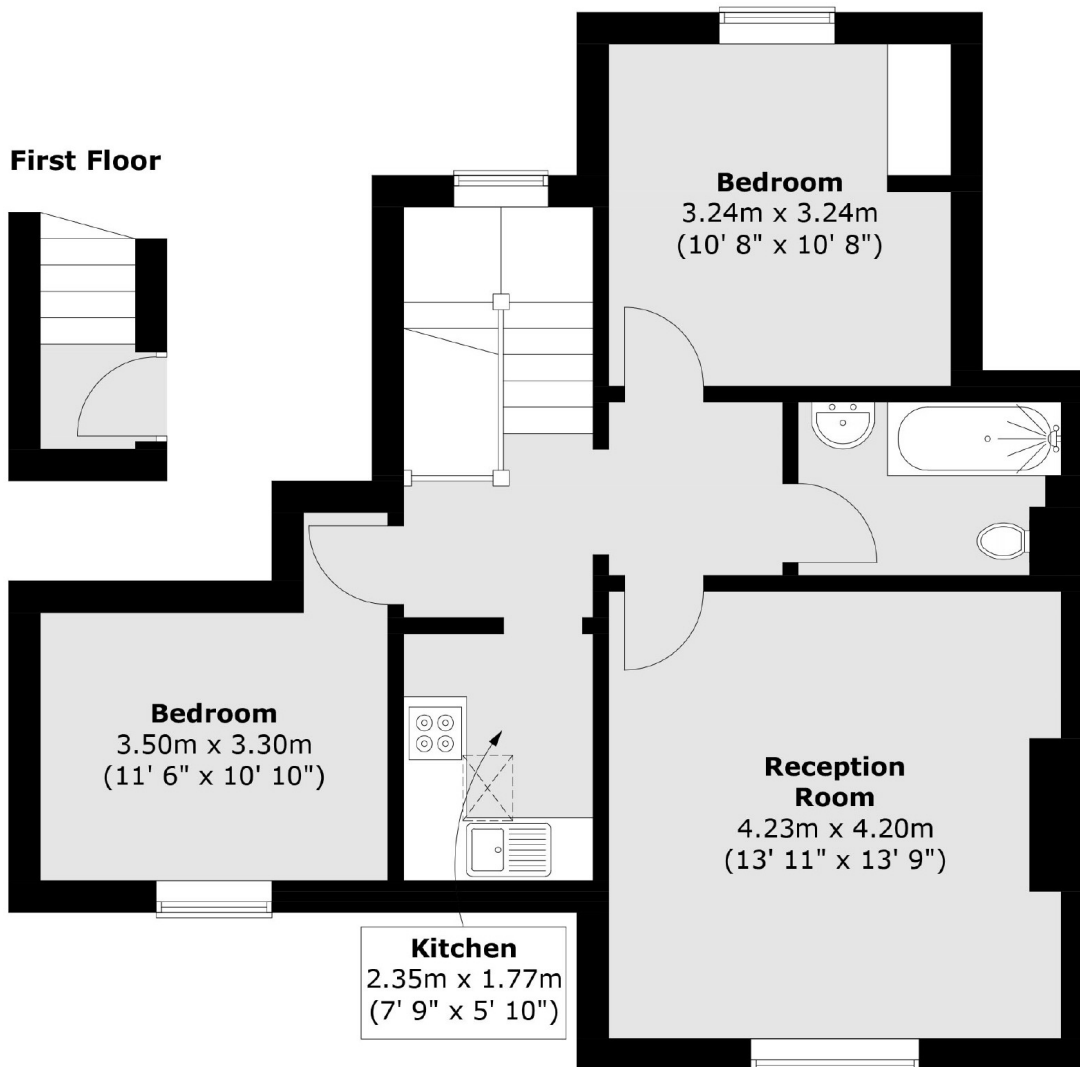
Thornbury Road is located close to the popular Abbeville Village, Clapham Common & Brixton. Transport links are excellent with regular bus services on Kings Avenue and both Clapham South and Clapham Common Stations (Northern Line).

Features

- Period Conversion
- Large Reception Room
- Modern Kitchen
- Two Double Bedrooms
- Communal Garden
- Long Lease

Thornbury Road, London, SW2

Second Floor



Total area (approx.) : 61.3 sq. m (660 sq. ft)