



Upper Tooting Park, SW17

£700,000

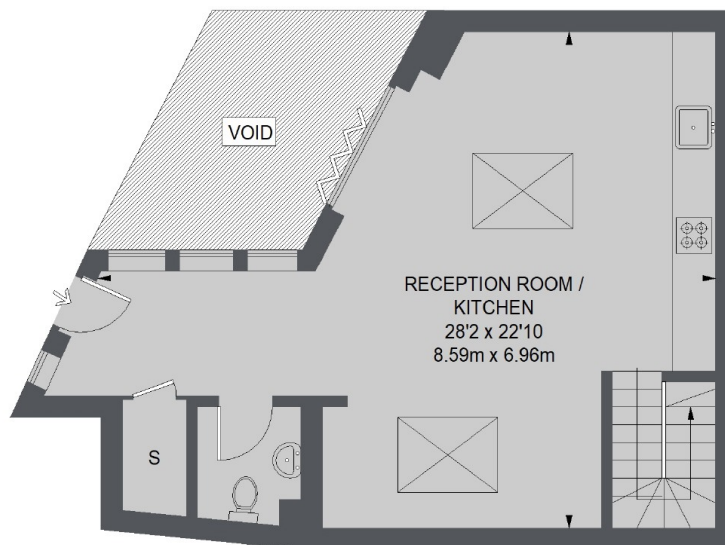
A detached, architecturally impressive freehold home finished to a high and tasteful standard throughout. The accommodation is arranged over two levels and includes a vast open plan reception room with ample room to dine and a modern, integrated kitchen, two double bedrooms, a family bathroom and a further cloakroom. Outside there is a private patio garden.

Upper Tooting Park is located within a short walk to the shops and restaurants of Bellevue Road along with the open expanse of Wandsworth Common. Both the Underground stations at Tooting Bec and Wandsworth Common are nearby and give quick access to the City and West end. The area is extremely well served by both state and private schools.

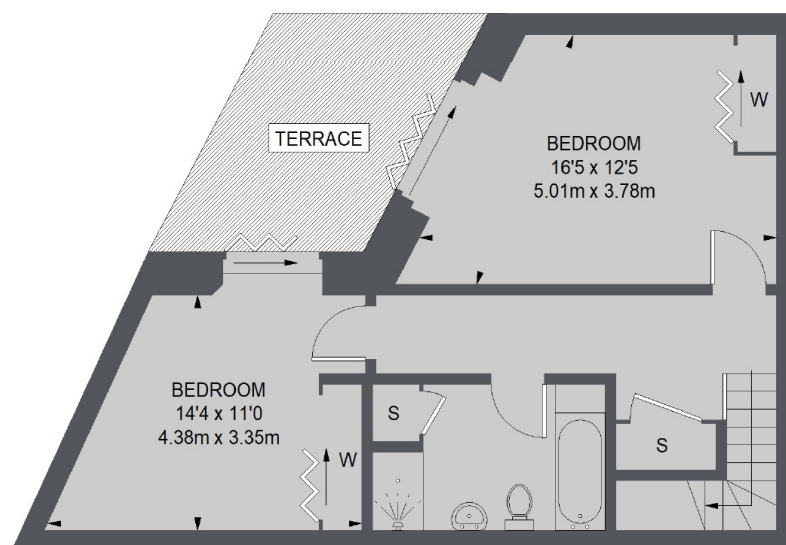
Features

- Freehold Home
- Open Plan Reception
- Contemporary Kitchen
- Two Bedrooms
- Patio Garden
- Chain Free

Upper Tooting Park, London, SW17



GROUND FLOOR



LOWER GROUND FLOOR

TOTAL APPROX. FLOOR AREA (EXCLUDING VOID)
1050 SQ. FT. (97.58 SQ. M.)