



Balham High Road, SW17

£499,950

A superb lateral apartment situated within one of South West London's most iconic Art Deco buildings, Du Cane Court. Comprising a spacious, centralised reception room, a separate newly fitted kitchen with integrated appliances, two equally sized double bedrooms with fitted storage and a modern bathroom.

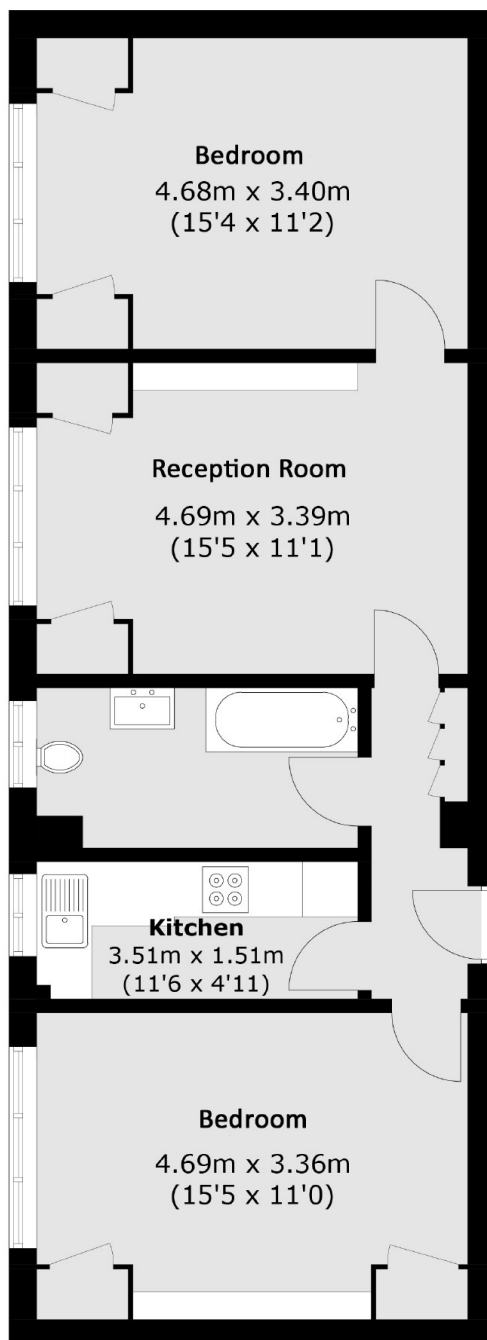
Built in 1937 this Art Deco building offers a secure setting with a lift, post room, concierge and beautifully manicured communal gardens. The building is immaculately maintained and there is permitted parking within the grounds. Hot water and heating are included in the service charge.

Balham High Road provides a wide selection of shops, bars and restaurants, while Balham station is only a few minutes away for National Rail links into Victoria and Northern Line Underground routes to central London.

Features

- Contemporary Apartment
- Two Bedrooms
- Modern Kitchen & Bathroom
- Concierge
- Chain Free
- Excellent Local School

Balham High Road, London, SW17



Total area (approx.): 65.9 sq. m (709.3 sq. ft)