



Singer Mews, SW4

£675,000

A rarely available and highly sought-after triplex apartment situated within a modern, gated development with secure allocated parking. Extending to a staggering 1,423 sq.ft, the property blends living with entertaining space perfectly, comprising a private entrance which opens onto a large open plan reception room with a contemporary kitchen and ample room to dine, two double bedrooms with fitted wardrobes, two bathrooms one of which is an en-suite, a utility room and further cloakroom.

Singer Mews is located moments from the many shops, restaurants and cafés of Clapham Old Town & Clapham High Street. Clapham North & Stockwell Underground stations are a very short walk away.

Features

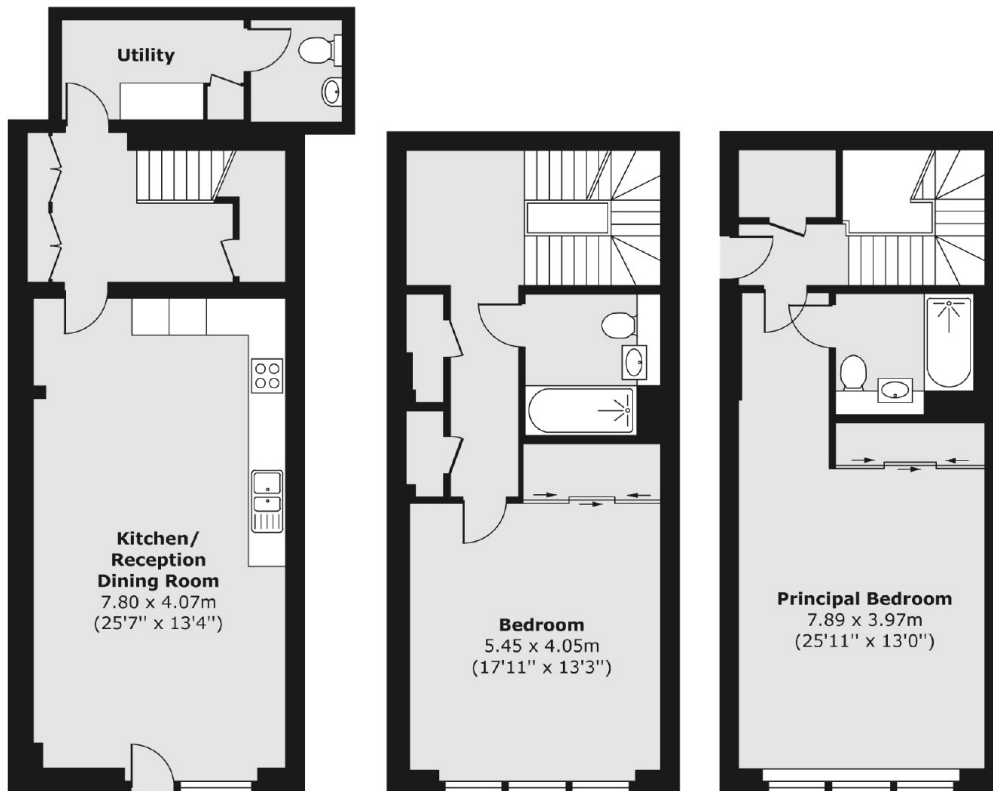
- Triplex Apartment
- Open Plan Reception
- Two Double Bedrooms
- Two Bathrooms
- Allocated Parking
- Courtyard

Singer Mews, London, SW4

Lower Ground Floor

Ground Floor

First Floor



Total area (approx.) 132.23 sq. m (1,423 sq. ft)