



Wendle Square, SW11

£2,700 Per week

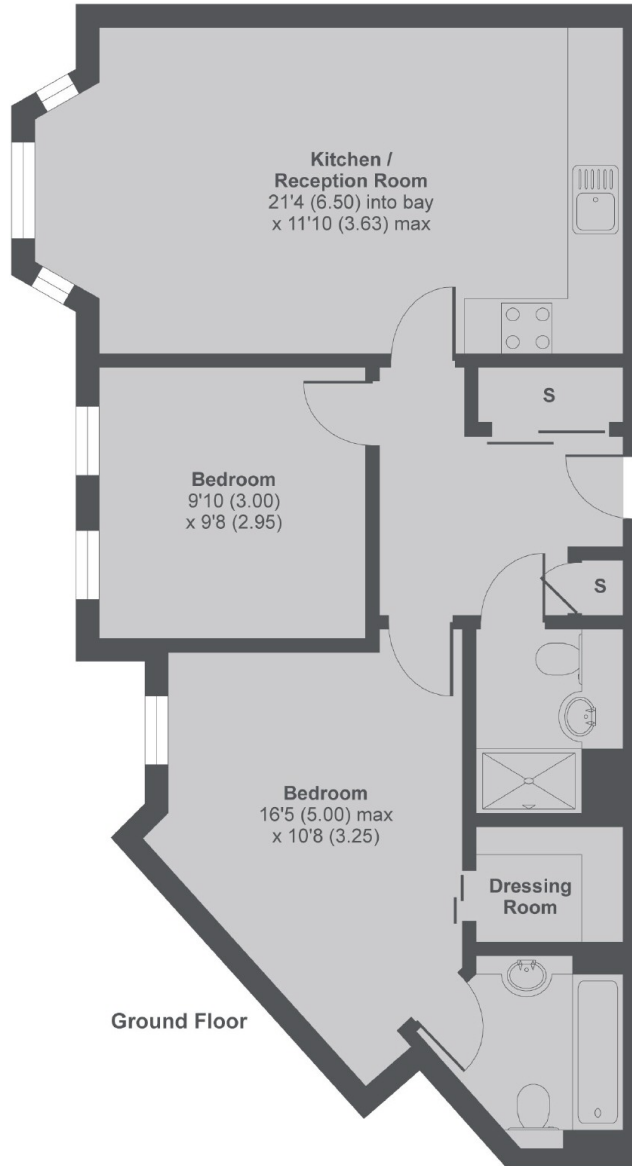
A luxurious two double bedroom, two bathroom apartment within this immaculate modern development. The finish is immaculate and there is an allocated off street parking.

Wendle Square is a great development right next to Battersea Park, a short walk to the river and even accessible to Kings Road and the likes of Chelsea.

Features

- Two Bedrooms
- Two Bathrooms
- Modern Development
- Off Street Parking
- High Quality Finish
- Ground Floor

Wendle Square, London, SW11



Wendle Square, SW11

MAIN HOUSE APPROX FLOOR AREA 684 SQ.FT 63.5 SQ.M

Copyright nichecom.co.uk 2017 Produced for Dexters REF : 196286

Dexters

Battersea
174A Lavender Hill
London
SW11 5TG
Lettings
020 7350 1300

Energy Rating: D. We aim to make our particulars both accurate and reliable. However they are not guaranteed; nor do they form part of an offer or contract. If you require clarification on any points then please contact us, especially if you're traveling some distance to view. Please note that appliances and heating systems have not been tested and therefore no warranties can be given as to their good working order.

 **RICS** | Regulated
Estate Agent
and Letting Agent

[dexters.co.uk](https://www.dexters.co.uk)