



York Road, SW11

£2,750 Per calendar month

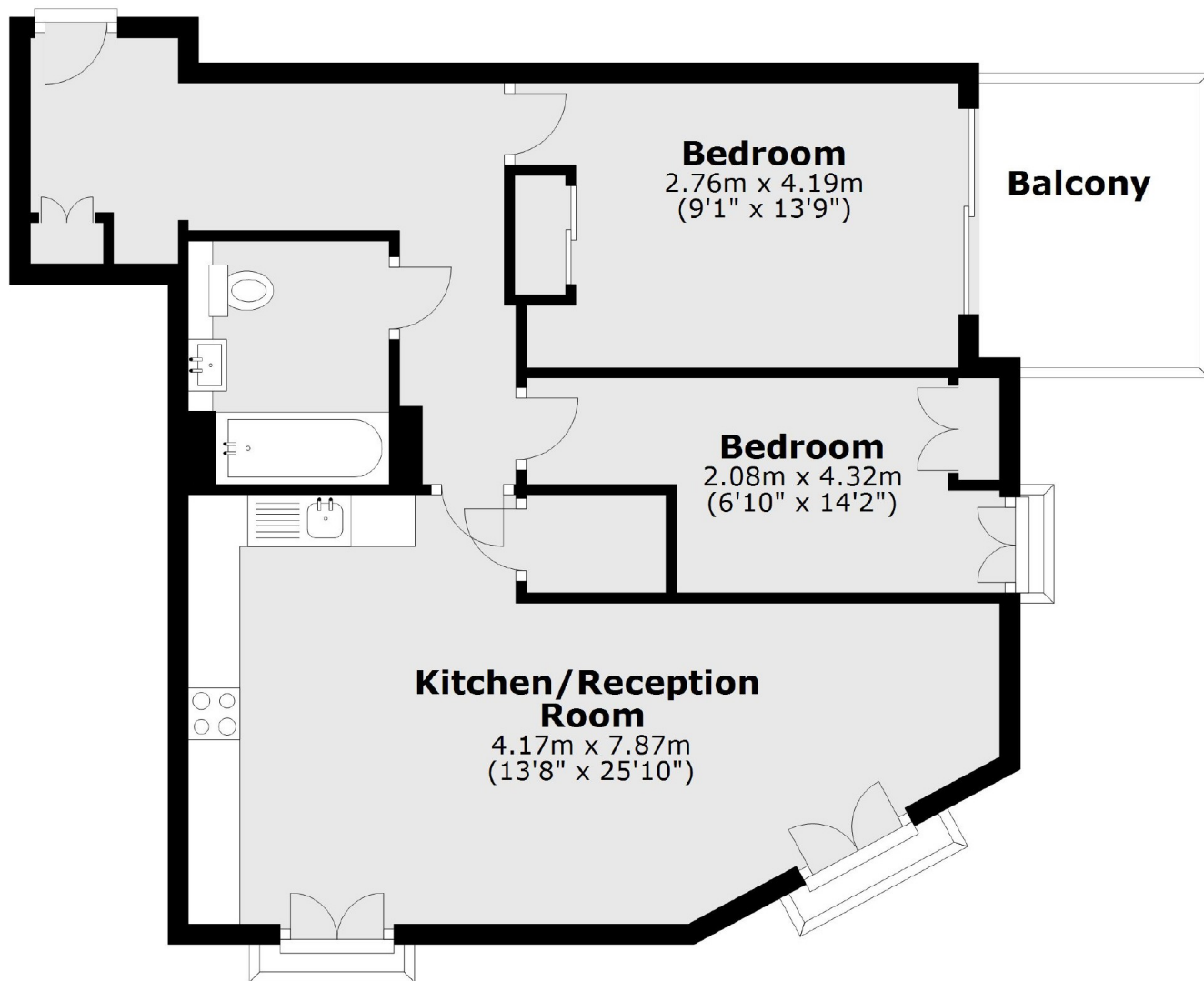
A spectacular designer decorated two bedroom apartment with pleasant Battersea views, in brand new development. It offers an open plan reception/kitchen, two bedrooms, a modern bathroom and access to the communal rooftop.

York Apartments are within reach of Clapham Junction and Wandsworth Town with many bars and restaurants.

Features

- Two Bedrooms
- Concierge Service
- Communal Rooftop
- High Specification
- Built-In Wardrobes
- Prime Location

York Road, London, SW11



Main area: Approx. 63.6 sq. metres (685.1 sq. feet)
Plus balconies, approx. 6.2 sq. metres (66.4 sq. feet)

Dexters

Battersea
174A Lavender Hill
London
SW11 5TG
Lettings
020 7350 1300

Energy Rating: B. We aim to make our particulars both accurate and reliable. However they are not guaranteed; nor do they form part of an offer or contract. If you require clarification on any points then please contact us, especially if you're traveling some distance to view. Please note that appliances and heating systems have not been tested and therefore no warranties can be given as to their good working order.

 **RICS** | Regulated
Estate Agent
and Letting Agent

dexters.co.uk