



Fontarabia Road, SW11

£5,500 Per calendar month

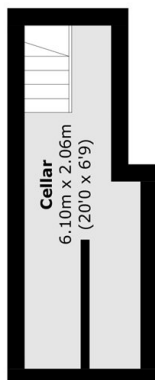
An exceptional five double bedroom freehold home measuring just shy of 1,900 Sq Ft on the sought after Fontarabia Road. The property comprises of a double reception room, extended eat-in kitchen, five double bedrooms, three bathrooms, additional ground floor WC & private garden.

Fontarabia Road is located moments from Clapham Common and the many shops, cafés, gyms and restaurants on Lavender Hill. The fashionable Northcote Road is within a short walk, along with the department stores and excellent transport links of Clapham Junction.

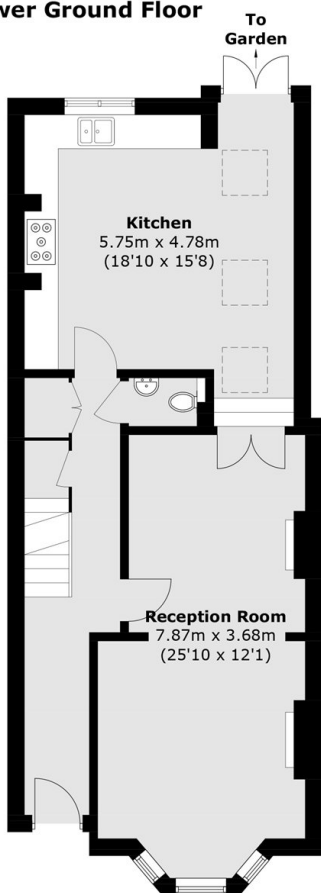
Features

- Extended Victorian House
- Suitable For Sharers
- Double Reception Room
- Five Double Bedrooms
- Three Bathrooms & WC
- Private Garden

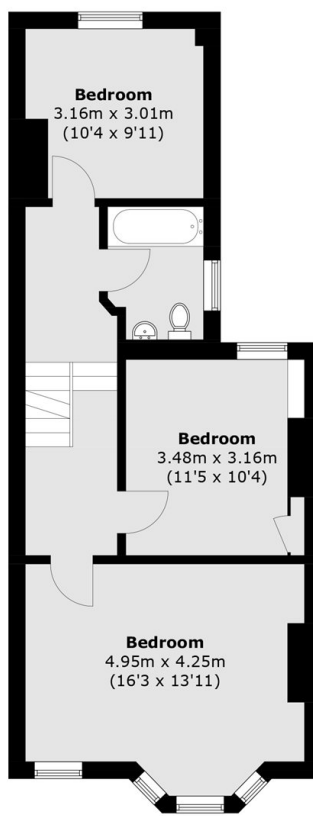
Fontarabia Road, London, SW11



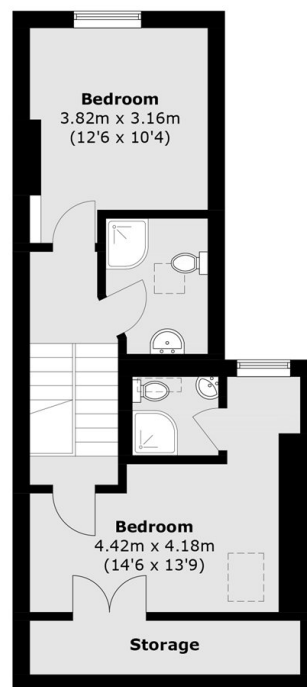
Lower Ground Floor



Ground Floor



First Floor



Second Floor

Total area (approx.): 175.0 sq. m (1,883.7 sq. ft)