



Watford Close, SW11

£2,750 Per calendar month

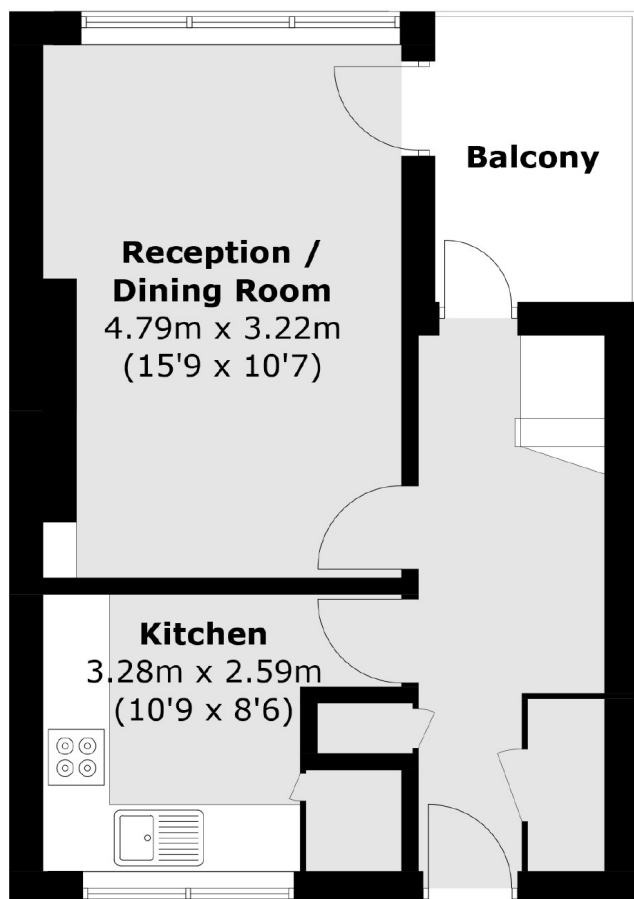
A three double bedroom flat with a large living room, an eat in kitchen, modern bathroom and balcony.

Located next to Battersea Park. There are lots of local restaurants and shops nearby including Battersea Power Station and the bus stop on your doorstep takes you over the river and into Chelsea in around 5 minutes.

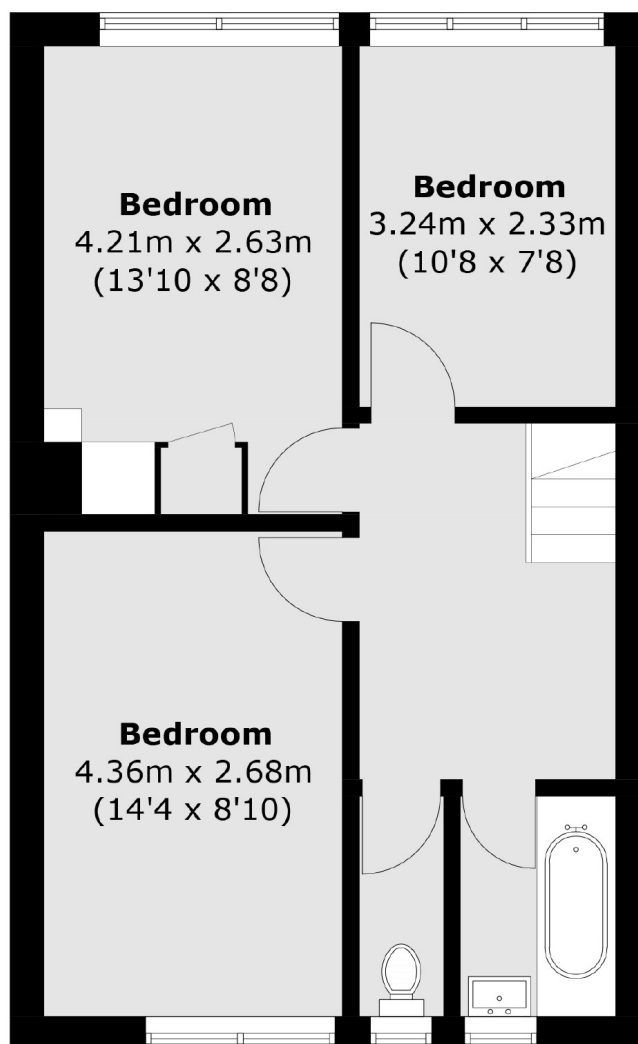
Features

- 3 Double Bedrooms
- Recently re-painted
- Private Balcony
- Battersea Park
- Battersea Power Station
- Available Now

Watford Close, London, SW11



First Floor



Second Floor

Total area (approx.): 77.7 sq. m (836.3 sq. ft)
Balcony: 4.5 sq. m (48.4 sq. ft)