



## Amies Street, SW11

£3,250 Per calendar month

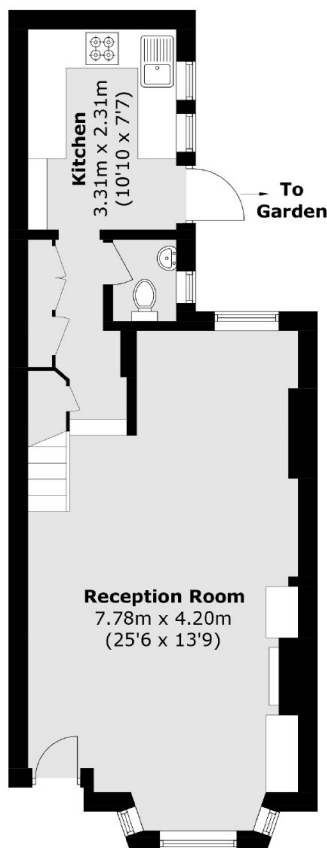
Available from 6th October for 6/7 months. A fully refurbished mid terrace Victorian house located on a very desirable street close to Clapham Junction. On the first floor of this stunning modern refurbishment, there is the master bedroom and family bathroom. On the top floor is a spacious bedroom with a second separate shower room and a sought after roof terrace. The smallest middle bedroom will be locked and out of use for the duration of the tenancy.

Amies Street is well located for the shops and restaurants on Lavender Hill and Northcote Road. Within walking distance is a gourmet pub, Latchmere and Nuffield leisure centres plus Clapham Junction, Battersea Park and Clapham Common are all close by.

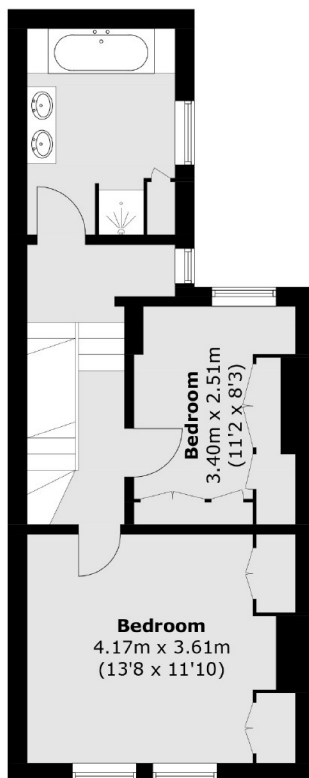
### Features

Fully Refurbished  
Two Double Bedrooms  
Two Bathrooms  
Double Reception Room  
Roof Terrace  
6/7 Month Let

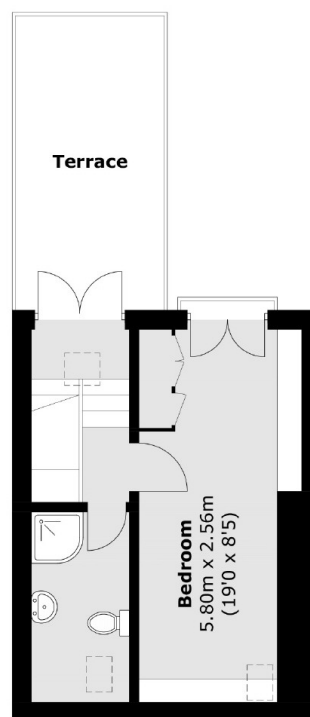
# Amies Street, London, SW11



**Ground Floor**



**First Floor**



**Second Floor**

Total area (approx.): 106.3 sq. m (1,144.2 sq. ft)  
Terrace: 10.6 sq. m (114.1 sq. ft)