

## Sullivan Close, SW11

£2,400 Per calendar month

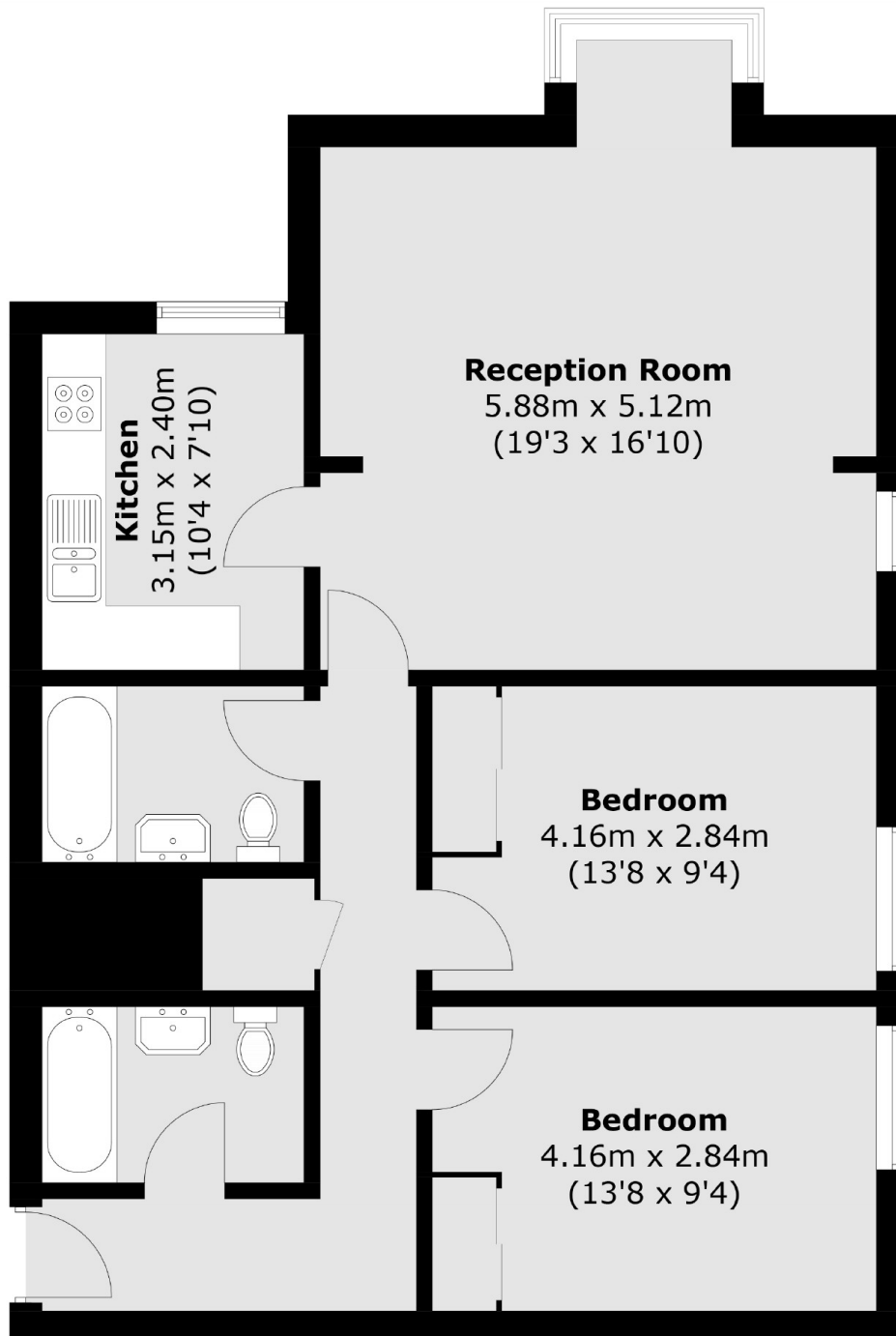
*\*Under Refurbishment\** A large two double bedroom flat within a secure gated development. Both bedrooms are a good size with ample built in storage with a modern kitchen and large living/dinning room.

Bramlands Close is located 0.1 Miles from Clapham Junction Station and St Johns hill with an abundance of shops, restaurants and bars.

### Features

- Two Bedrooms
- Modern Kitchen
- Two Bathrooms
- Fantastic Location
- Swimming Pool
- Gym

Sullivan Close,  
London, SW11



Total area (approx.): 82.0 sq. m (882.6 sq. ft)

**Dexters**

Battersea  
174A Lavender Hill  
London  
SW11 5TG  
Lettings  
020 7350 1300

Energy Rating: C. We aim to make our particulars both accurate and reliable. However they are not guaranteed; nor do they form part of an offer or contract. If you require clarification on any points then please contact us, especially if you're traveling some distance to view. Please note that appliances and heating systems have not been tested and therefore no warranties can be given as to their good working order.

 **RICS** | Regulated  
Estate Agent  
and Letting Agent

[dexters.co.uk](https://www.dexters.co.uk)