



## Fowler Close, SW11

£2,600 Per week

A three double bedroom, split level flat in this purpose built development close to Clapham Junction with a separate, spacious reception room, three double bedrooms, a separate kitchen and private balcony.

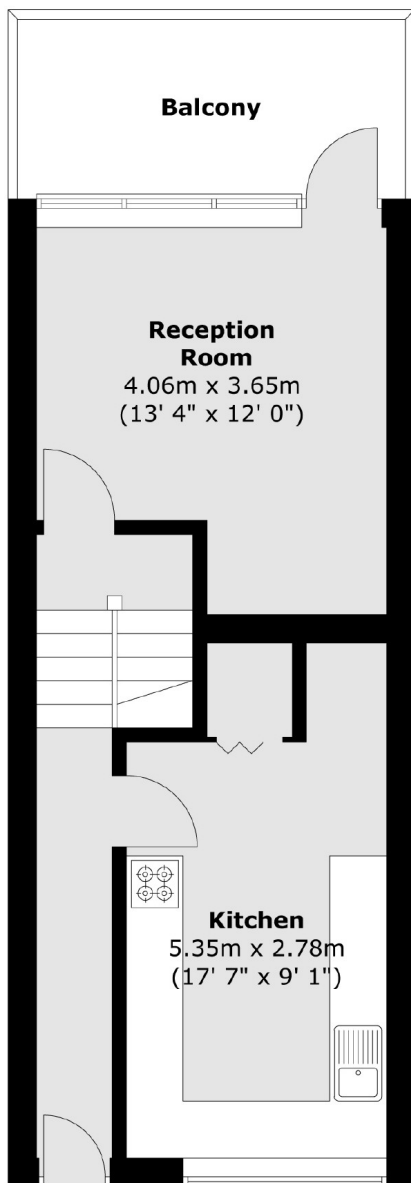
Just off of Plough Road this development in Fowler Close is less than 0.3 miles to Clapham Junction. Located perfectly by all the local shops, bars and restaurants.

### Features

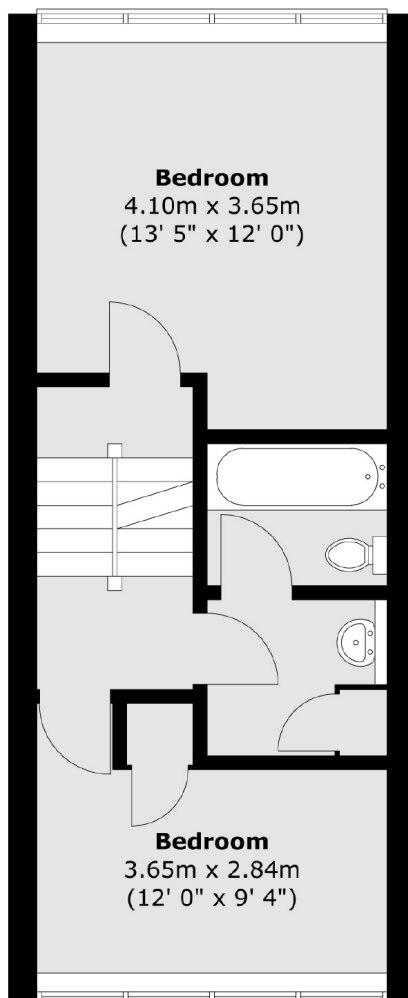
- Three Double Bedrooms
- One Bathroom
- Separate Living Kitchen
- Split Level
- Wooden Flooring
- Private Balcony

# Fowler Close, London, SW11

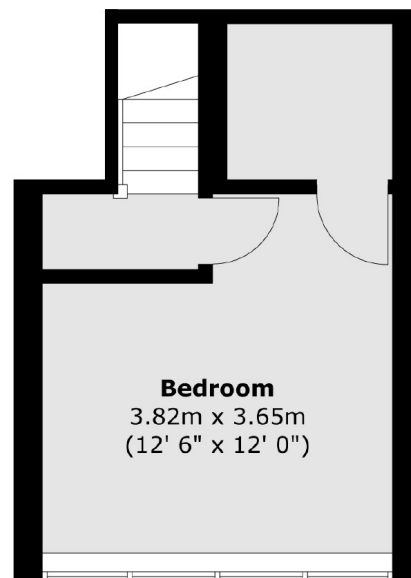
## Second Floor



## Third Floor



## Fourth Floor



Total area (approx.) : 91.7 sq. m (987 sq. ft)  
Total balcony area (approx.) : 7.8 sq. m (84 sq. ft)