



## Fontarabia Road, SW11

£525 Per week

A two bedroom flat split over two levels and offering spacious living accommodation, two bathrooms and a roof terrace making this property perfect for a professional couple.

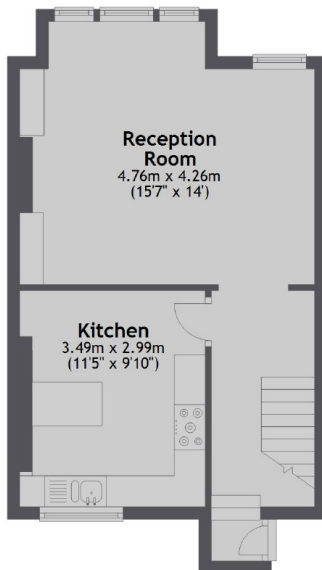
Situated between Lavender Hill and Clapham Common, it's a fantastic location with the options of both Clapham Junction and Clapham Common.

### Features

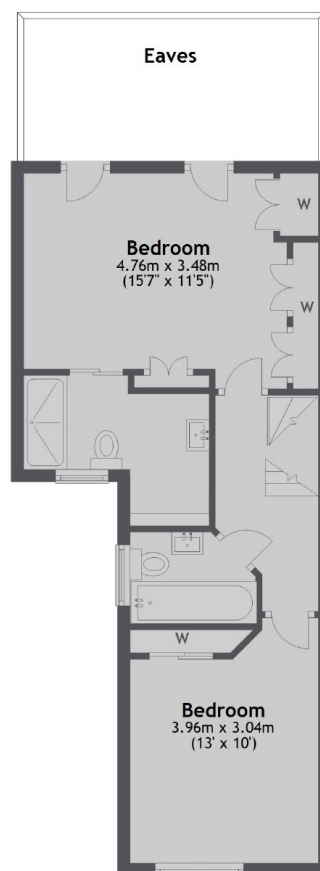
- Two Bedrooms
- Two Bathrooms
- Private Roof Terrace
- Split Level
- Very High Quality
- Clapham Common

## Fontarabia Road, London, SW11

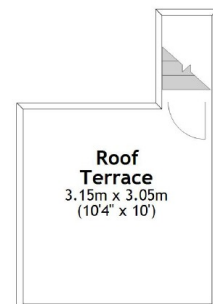
**First Floor**



**Second Floor**



**Third Floor**



Total area: approx. 88.8 sq. metres (955.6 sq. feet)

### Contact

To arrange a viewing call our office on the number below or visit our website.



Energy Rating: . We aim to make our particulars both accurate and reliable. However they are not guaranteed; nor do they form part of an offer or contract. If you require clarification on any points then please contact us, especially if you're traveling some distance to view. Please note that appliances and heating systems have not been tested and therefore no warranties can be given as to their good working order.