



Queenstown Road, SW8

£553 Per week

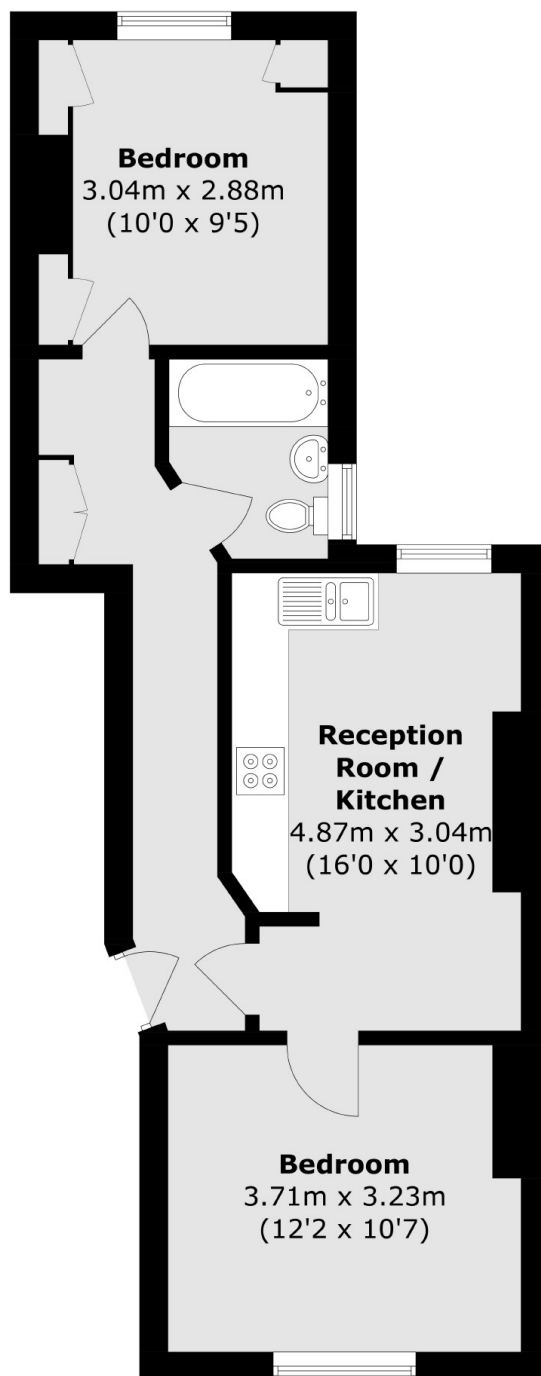
A spacious two bedroom flat located on Queenstown road presents a eat-in kitchen with wooden flooring, a modern bathroom and ample storage throughout.

Perfectly located close to the the river and opposite Battersea Park, Sloane Square and Battersea Power Station, allowing easy access to and from the City.

Features

- Two Bedrooms
- One Modern Bathroom
- Eat-In Kitchen
- High Specification
- Part Furnished
- Prime Location

Queenstown Road, London, SW8



Total area (approx.): 49.1 sq. m (528.5 sq. ft)