



Battersea Church Road, SW11

£635 Per week

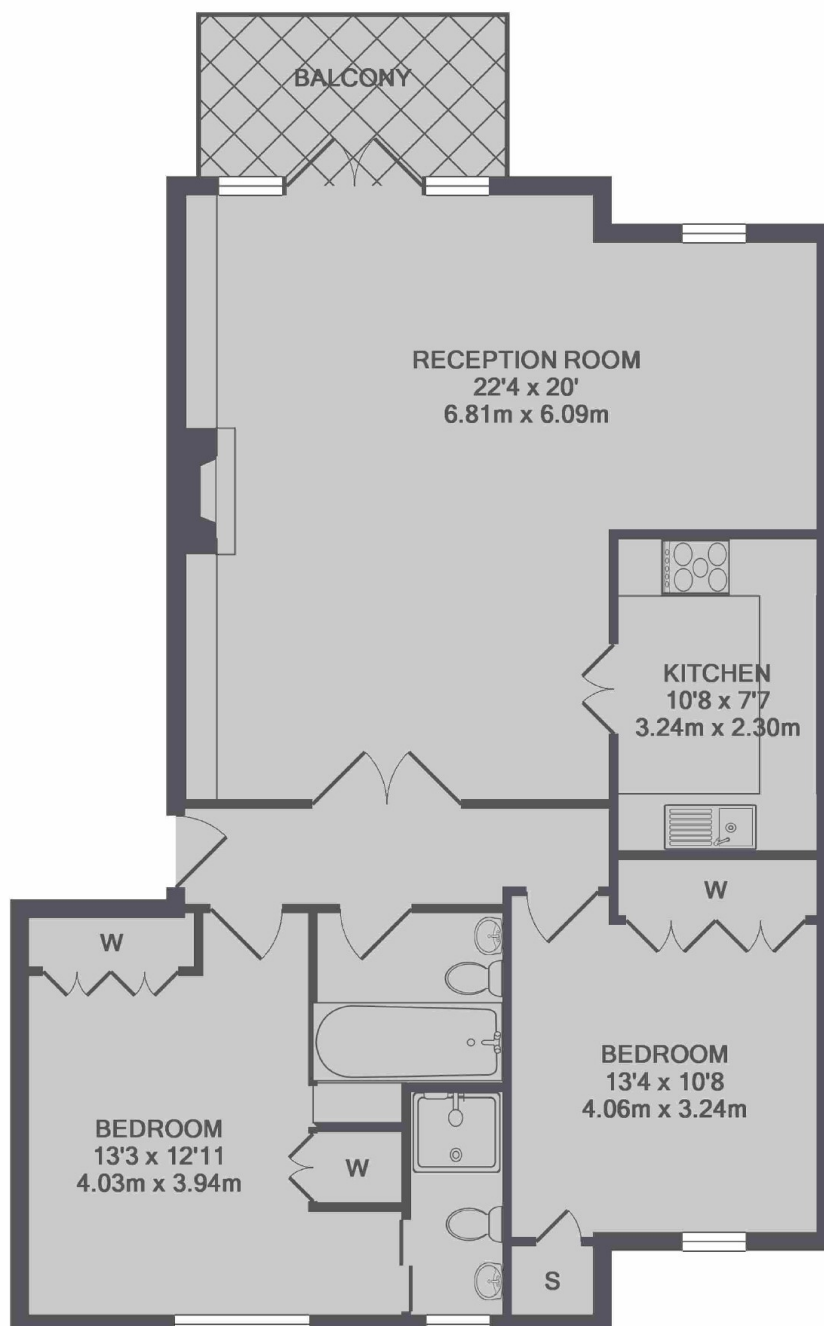
A two bedroom apartment, moments from the River Thames, offering light and spacious accommodation. Also benefitting from an off street parking space, this property is ideally suited to a professional couple or sharers.

Battersea Church Road is located 0.2 miles from the River Thames and less than a mile from the King's Road. Benefitting from good transport links across London.

Features

- Two Bedrooms
- Spacious Living
- Plenty Of Natural Light
- Private Balcony
- Private Parking Space
- Gated Development

Battersea Church Road, London, SW11



TOTAL APPROX. FLOOR AREA 923 SQ.FT. (85.7 SQ.M.)